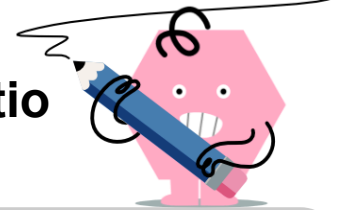




Balance Shapes - 2 Beams, Simple Ratio



| | | | |
|---|-------|-------|-------|
| 1 Which shapes will balance the bottom scale? | A | B | C |
| | D | E | |
| 2 Which shapes will balance the bottom scale? | A | B | C |
| | D | | |
| 3 Which shapes will balance the bottom scale? | A | B | C |
| | D | | |
| 4 Which shapes will balance the bottom scale? | A | B | C |
| | D | E | |
| 5 Which shapes will balance the bottom scale? | A | B | C |
| | D | E | |
| 6 Which shapes will balance the bottom scale? | A | B | C |
| | D | | |
| 7 Which shapes will balance the bottom scale? | A | B | C |
| | D | | |
| 8 Which shapes will balance the bottom scale? | A | B | C |
| | D | | |