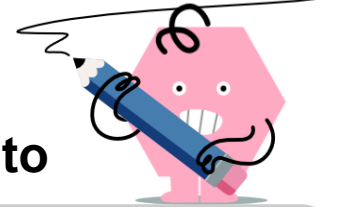
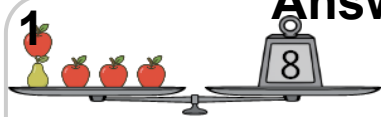




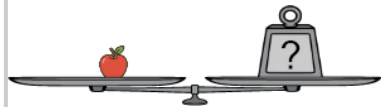
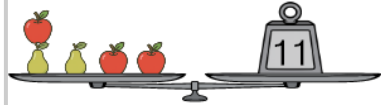
Algebra Weights - 3 Scales, 2 Shapes (Simple Substitution, Simple Answer), to



Answer



What weight would balance the bottom scale?



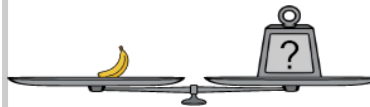
A



B



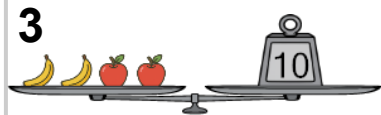
What weight would balance the bottom scale?



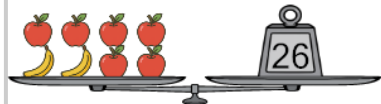
A



B



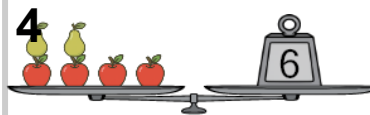
What weight would balance the bottom scale?



A



B



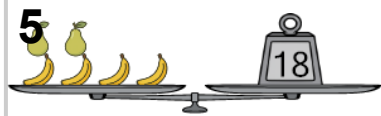
What weight would balance the bottom scale?



A



B



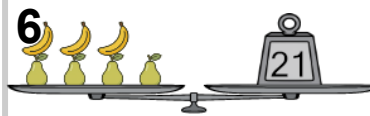
What weight would balance the bottom scale?



A



B



What weight would balance the bottom scale?



A



B



What weight would balance the bottom scale?



A



B



What weight would balance the bottom scale?



A



B

