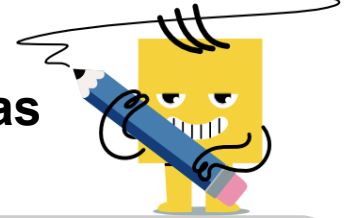




Algebraic Functions - Meaning of Dot as Multiplication



<p>1 What common math function does showing 2 and b with a dot between them mean?</p> <p>$2 \cdot b$</p>	<p>A $2 + b$</p>	<p>B b^2</p>	<p>C $2 \times b$</p>	<p>2 What common math function does showing 6 and p with a dot between them mean?</p> <p>$6 \cdot p$</p>	<p>A 6^p</p>	<p>B $6 + p$</p>	<p>C $\frac{6}{p}$</p>
	<p>D $\frac{2}{b}$</p>	<p>E 2^b</p>	<p>F $2 - b$</p>		<p>D $6 - p$</p>	<p>E $6 \times p$</p>	<p>F p^6</p>
<p>3 What common math function does showing 2 and m with a dot between them mean?</p> <p>$2 \cdot m$</p>	<p>A $2 \times m$</p>	<p>B m^2</p>	<p>C $2 + m$</p>	<p>4 What common math function does showing 5 and c with a dot between them mean?</p> <p>$5 \cdot c$</p>	<p>A c^5</p>	<p>B $\frac{5}{c}$</p>	<p>C 5^c</p>
	<p>D $2 - m$</p>	<p>E 2^m</p>	<p>F $\frac{2}{m}$</p>		<p>D $5 - c$</p>	<p>E $5 \times c$</p>	<p>F $5 + c$</p>
<p>5 What common math function does showing 9 and r with a dot between them mean?</p> <p>$9 \cdot r$</p>	<p>A 9^r</p>	<p>B $\frac{9}{r}$</p>	<p>C $9 \times r$</p>	<p>6 What common math function does showing 4 and c with a dot between them mean?</p> <p>$4 \cdot c$</p>	<p>A $4 \times c$</p>	<p>B $4 + c$</p>	<p>C $\frac{4}{c}$</p>
	<p>D r^9</p>	<p>E $9 + r$</p>	<p>F $9 - r$</p>		<p>D $4 - c$</p>	<p>E 4^c</p>	<p>F c^4</p>
<p>7 What common math function does showing 2 and y with a dot between them mean?</p> <p>$2 \cdot y$</p>	<p>A $2 - y$</p>	<p>B $\frac{2}{y}$</p>	<p>C $2 + y$</p>	<p>8 What common math function does showing 4 and y with a dot between them mean?</p> <p>$4 \cdot y$</p>	<p>A y^4</p>	<p>B $\frac{4}{y}$</p>	<p>C 4^y</p>
	<p>D y^2</p>	<p>E $2 \times y$</p>	<p>F 2^y</p>		<p>D $4 - y$</p>	<p>E $4 \times y$</p>	<p>F $4 + y$</p>