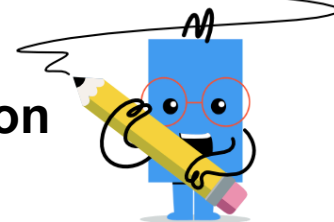




Algebraic Function Variable Substitution - Bracketed Squared Terms



1 What is the value of this equation
when
 $m=2, x=4$

$$(2m + 2x)^2$$

A	B	C	D	E	F
16	-8	16	-16	40	144

2 What is the value of this equation
when
 $y=3, p=2$

$$(3y + 2p)^2$$

A	B	C	D	E	F
-81	35	-27	169	31	81

3 What is the value of this equation
when
 $c=3, z=2$

$$(3c + 2z)^2$$

A	B	C	D	E	F
31	169	-81	-27	81	35

4 What is the value of this equation
when
 $d=3, c=2$

$$(2d + 2c)^2$$

A	B	C	D	E	F
-18	-36	100	26	36	22

5 What is the value of this equation
when
 $d=2, r=4$

$$(2d + 2r)^2$$

A	B	C	D	E	F
40	-16	16	-8	144	16

6 What is the value of this equation
when
 $r=2, z=4$

$$(2r + 2z)^2$$

A	B	C	D	E	F
16	-16	144	16	40	-8

7 What is the value of this equation
when
 $z=3, n=2$

$$(3z + 2n)^2$$

A	B	C	D	E	F
169	-81	31	35	81	-27

8 What is the value of this equation
when
 $n=2, z=3$

$$(2n + 2z)^2$$

A	B	C	D	E	F
26	14	-16	16	-8	100