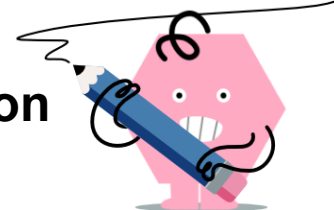




## Algebraic Function Variable Substitution - Simple Squared Terms



**1** What is the value of this equation  
when  
 $d=5, r=2$

$$5d^2 - 4r^2$$

A	B	C	D	E	F
141	-125	625	133	109	-625

**2** What is the value of this equation  
when  
 $m=4, p=2$

$$3m^2 - 6p^2$$

A	B	C	D	E	F
60	24	-48	-144	144	72

**3** What is the value of this equation  
when  
 $d=3, m=5$

$$4d^2 + 4m^2$$

A	B	C	D	E	F
-144	136	56	144	-36	-64

**4** What is the value of this equation  
when  
 $b=4, m=5$

$$3b^2 - 5m^2$$

A	B	C	D	E	F
144	-144	-48	173	-77	73

**5** What is the value of this equation  
when  
 $p=2, m=4$

$$6p^2 - 6m^2$$

A	B	C	D	E	F
48	144	-72	-144	-24	120

**6** What is the value of this equation  
when  
 $c=3, m=5$

$$2c^2 + 3m^2$$

A	B	C	D	E	F
36	-57	33	-36	-18	93

**7** What is the value of this equation  
when  
 $c=3, n=2$

$$4c^2 - 3n^2$$

A	B	C	D	E	F
42	-36	-144	24	48	144

**8** What is the value of this equation  
when  
 $x=3, d=5$

$$6x^2 + 6d^2$$

A	B	C	D	E	F
204	-96	-324	324	84	-54