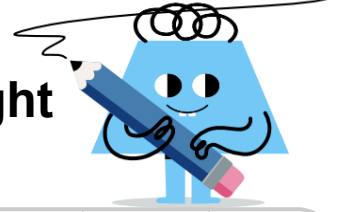




## Angles - Acute, Obtuse, Right or Straight (Reversed)



<b>1</b>	Find the image that shows an example of the type of angle	A	B	C
		D		
Straight				
<b>2</b>	Find the image that shows an example of the type of angle	A	B	C
		D		
Acute				
<b>3</b>	Find the image that shows an example of the type of angle	A	B	C
		D		
Obtuse				
<b>4</b>	Find the image that shows an example of the type of angle	A	B	C
		D		
Right				