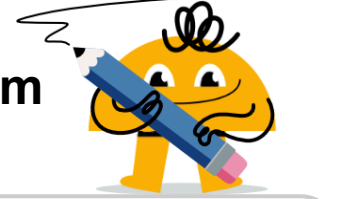
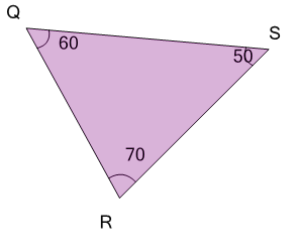


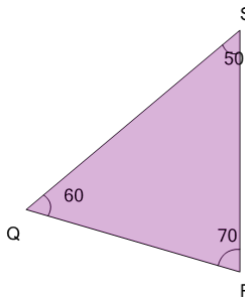


Angles - Naming - Degrees to ABC Form on a Triangle

**1**

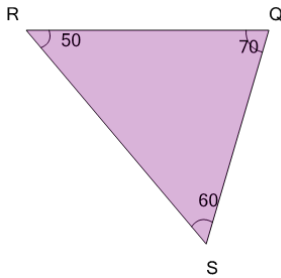
The angle that is 70° would be called what?

A	$\angle QRS$	B	$\angle SQR$
C	$\angle RSQ$	D	$\angle QSR$
E	$\angle RQS$		

2

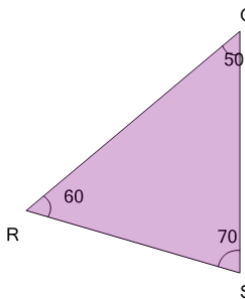
The angle that is 70° would be called what?

A	$\angle QSR$	B	$\angle SRQ$
C	$\angle SQR$	D	$\angle RSQ$
E	$\angle RQS$		

3

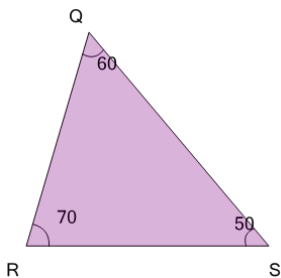
The angle that is 70° would be called what?

A	$\angle QRS$	B	$\angle QSR$
C	$\angle SRQ$	D	$\angle SQR$
E	$\angle RSQ$		

4

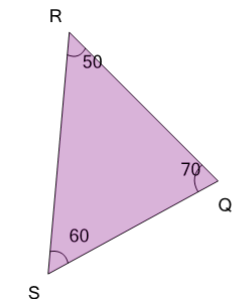
The angle that is 70° would be called what?

A	$\angle RQS$	B	$\angle QRS$
C	$\angle SRQ$	D	$\angle QSR$
E	$\angle SQR$		

5

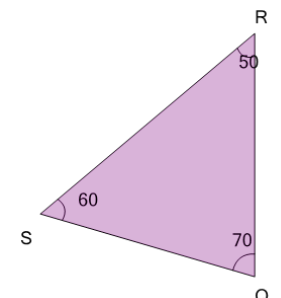
The angle that is 70° would be called what?

A	$\angle RQS$	B	$\angle QRS$
C	$\angle RSQ$	D	$\angle QSR$
E	$\angle SQR$		

6

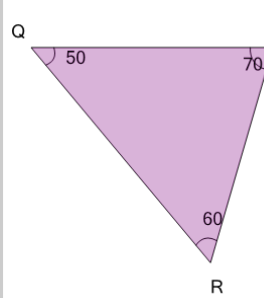
The angle that is 50° would be called what?

A	$\angle SQR$	B	$\angle RQS$
C	$\angle RSQ$	D	$\angle QSR$
E	$\angle QRS$		

7

The angle that is 70° would be called what?

A	$\angle QRS$	B	$\angle SQR$
C	$\angle RSQ$	D	$\angle QSR$
E	$\angle SRQ$		

8

The angle that is 50° would be called what?

A	$\angle RSQ$	B	$\angle SQR$
C	$\angle QSR$	D	$\angle SRQ$
E	$\angle QRS$		