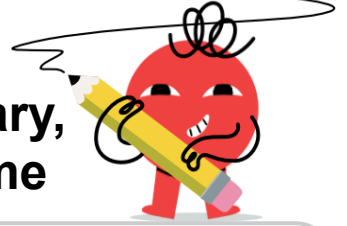




Angles - Complementary, Supplementary, Opposite, Corresponding - Rule to Name

**1**

What pair of angles would follow this rule?

Angles x and y are identical

A supplementary	B corresponding
C opposite	

2

What pair of angles would follow this rule?

Angles x and y add to 90°

A complementary
B corresponding
C opposite

3

What pair of angles would follow this rule?

Angles x and y don't determine each other

A supplementary	B complementary
C adjacent	

4

What pair of angles would follow this rule?

Angles x and y add to 180°

A opposite	B supplementary
C corresponding	