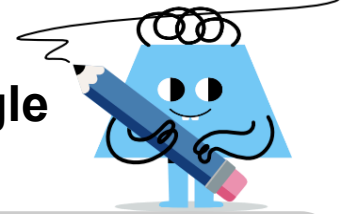




Angles - Remainder of 180 Degree Angle



1

A 180° angle is made up of a 140° angle and another angle. How many degrees is the other angle?

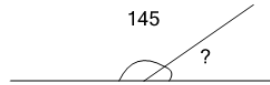


A	B	C
50°	40°	60°

D	E	F
20°	30°	35°

2

A 180° angle is made up of a 145° angle and another angle. How many degrees is the other angle?

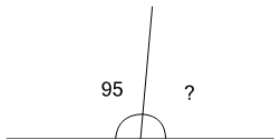


A	B	C
15°	35°	25°

D	E	F
20°	45°	40°

3

A 180° angle is made up of a 95° angle and another angle. How many degrees is the other angle?

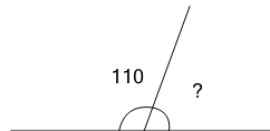


A	B	C
85°	105°	60°

D	E	F
95°	65°	70°

4

A 180° angle is made up of a 110° angle and another angle. How many degrees is the other angle?

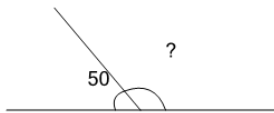


A	B	C
70°	50°	80°

D	E	F
65°	90°	55°

5

A 180° angle is made up of a 50° angle and another angle. How many degrees is the other angle?

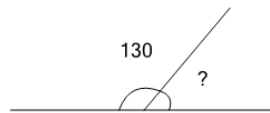


A	B	C
130°	115°	105°

D	E	F
110°	150°	125°

6

A 180° angle is made up of a 130° angle and another angle. How many degrees is the other angle?

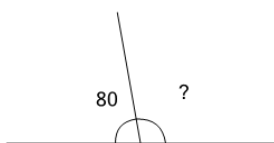


A	B	C
25°	50°	35°

D	E	F
30°	65°	40°

7

A 180° angle is made up of a 80° angle and another angle. How many degrees is the other angle?

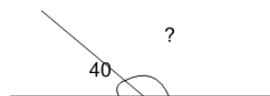


A	B	C
105°	95°	100°

D	E	F
85°	75°	90°

8

A 180° angle is made up of a 40° angle and another angle. How many degrees is the other angle?



A	B	C
150°	160°	125°

D	E	F
140°	155°	115°