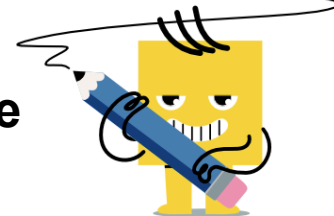
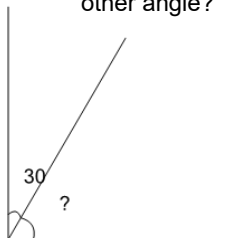




Angles - Remainder of 90 Degree Angle

**1**

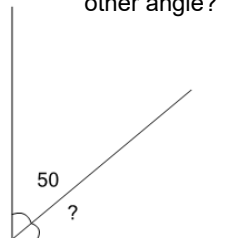
A 90° angle is made up of a 30° angle and another angle. How many degrees is the other angle?



A	B	C
40°	80°	60°
D	E	F
50°	45°	55°

2

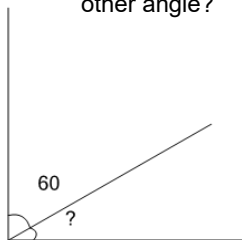
A 90° angle is made up of a 50° angle and another angle. How many degrees is the other angle?



A	B	C
60°	30°	35°
D	E	F
20°	15°	40°

3

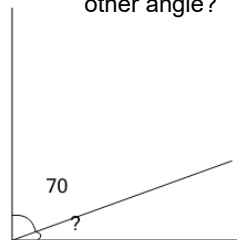
A 90° angle is made up of a 60° angle and another angle. How many degrees is the other angle?



A	B	C
50°	15°	30°
D	E	F
40°	10°	45°

4

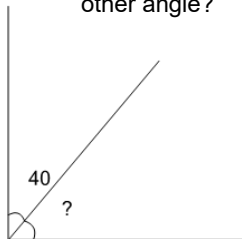
A 90° angle is made up of a 70° angle and another angle. How many degrees is the other angle?



A	B	C
20°	35°	25°
D	E	F
30°	10°	15°

5

A 90° angle is made up of a 40° angle and another angle. How many degrees is the other angle?



A	B	C
40°	55°	25°
D	E	F
70°	45°	50°