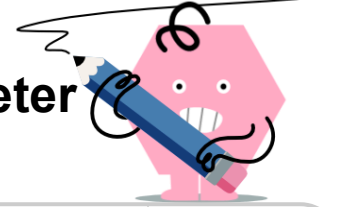


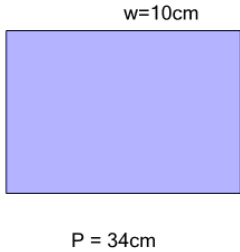


Area of a Rectangle - Area from Perimeter and Side



1

Find the area of this rectangle



A

7cm^2

B

91cm^2

C

70cm^2

D

133cm^2

E

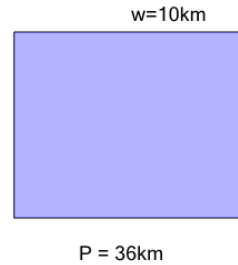
126cm^2

F

14cm^2

2

Find the area of this rectangle



A

144km^2

B

24km^2

C

8km^2

D

128km^2

E

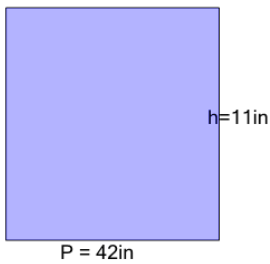
80km^2

F

136km^2

3

Find the area of this rectangle



A

165in^2

B

132in^2

C

110in^2

D

88in^2

E

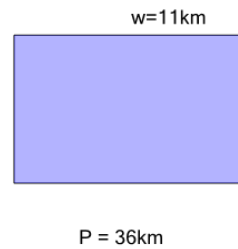
55in^2

F

143in^2

4

Find the area of this rectangle



A

77km^2

B

98km^2

C

140km^2

D

91km^2

E

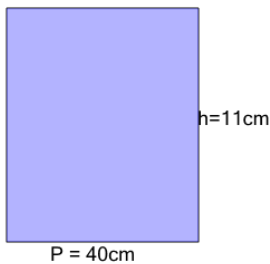
56km^2

F

49km^2

5

Find the area of this rectangle



A

171cm^2

B

135cm^2

C

162cm^2

D

144cm^2

E

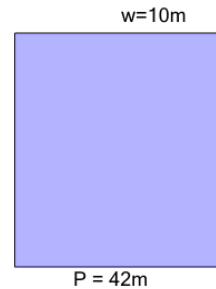
99cm^2

F

108cm^2

6

Find the area of this rectangle



A

11m^2

B

187m^2

C

110m^2

D

55m^2

E

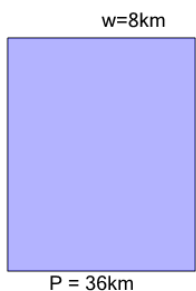
132m^2

F

143m^2

7

Find the area of this rectangle



A

112km^2

B

72km^2

C

144km^2

D

120km^2

E

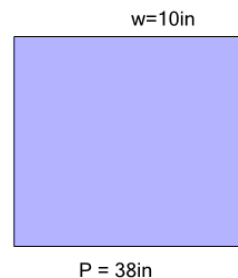
8km^2

F

80km^2

8

Find the area of this rectangle



A

90in^2

B

36in^2

C

45in^2

D

153in^2

E

162in^2

F

81in^2