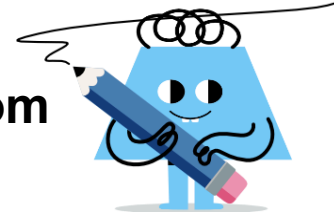


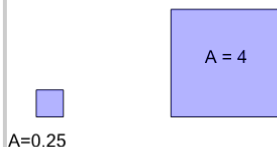


Area of a Rectangle - Tile Coverage from Area



1

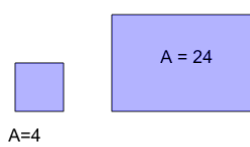
How many of the smaller tiles will it take to cover the larger area?



A	22	B	20
C	6	D	16
E	11	F	13

2

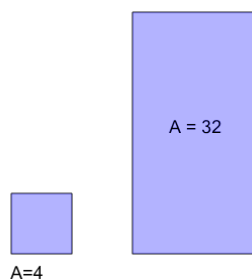
How many of the smaller tiles will it take to cover the larger area?



A	10	B	13
C	6	D	1
E	15	F	4

3

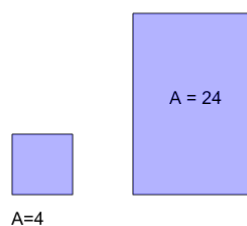
How many of the smaller tiles will it take to cover the larger area?



A	3	B	5
C	15	D	17
E	8	F	1

4

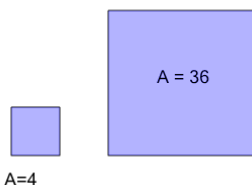
How many of the smaller tiles will it take to cover the larger area?



A	12	B	11
C	6	D	13
E	2	F	1

5

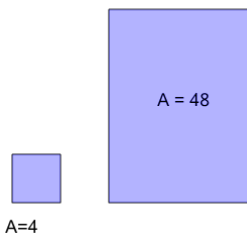
How many of the smaller tiles will it take to cover the larger area?



A	15	B	18
C	1	D	9
E	10	F	8

6

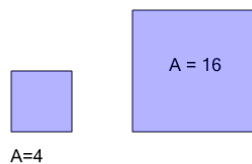
How many of the smaller tiles will it take to cover the larger area?



A	12	B	15
C	10	D	6
E	18	F	16

7

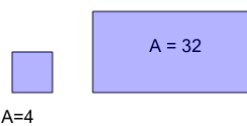
How many of the smaller tiles will it take to cover the larger area?



A	4	B	7
C	6	D	5
E	11	F	3

8

How many of the smaller tiles will it take to cover the larger area?



A	12	B	3
C	7	D	10
E	17	F	8