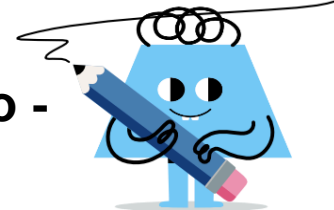
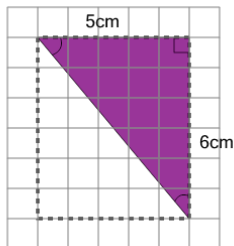


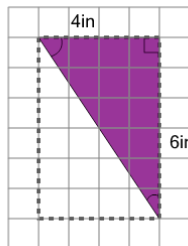


Area of a Right Triangle - Concept Intro - From Rectangle

**1**

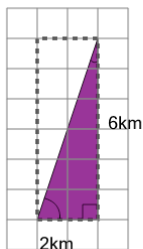
Find the area of the TRIANGLE by halving the area of the rectangle around it

- | | |
|--------------------|-------------------|
| A 21cm^2 | B 22cm^2 |
| C 2.4cm^2 | D 18cm^2 |
| E 15cm^2 | |

2

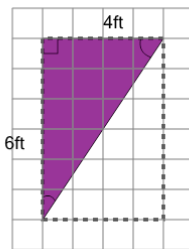
Find the area of the TRIANGLE by halving the area of the rectangle around it

- | | |
|-------------------|-------------------|
| A 20in^2 | B 12in^2 |
| C 24in^2 | D 18in^2 |
| | |

3

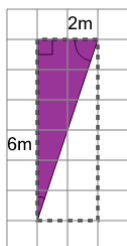
Find the area of the TRIANGLE by halving the area of the rectangle around it

- | | |
|------------------|-------------------|
| A 7km^2 | B 24km^2 |
| C 6km^2 | D 35km^2 |
| | |

4

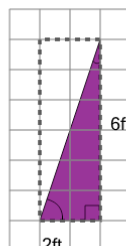
Find the area of the TRIANGLE by halving the area of the rectangle around it

- | | |
|-------------------|-------------------|
| A 20ft^2 | B 12ft^2 |
| C 24ft^2 | D 80ft^2 |
| E 63ft^2 | |

5

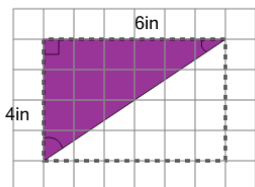
Find the area of the TRIANGLE by halving the area of the rectangle around it

- | | |
|------------------|-------------------|
| A 16m^2 | B 0.7m^2 |
| C 6m^2 | |
| | |

6

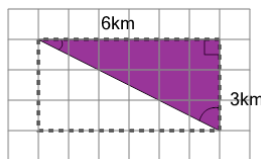
Find the area of the TRIANGLE by halving the area of the rectangle around it

- | | |
|-------------------|--------------------|
| A 12ft^2 | B 48ft^2 |
| C 16ft^2 | D 0.7ft^2 |
| E 6ft^2 | |

7

Find the area of the TRIANGLE by halving the area of the rectangle around it

- | | |
|-------------------|-------------------|
| A 56in^2 | B 18in^2 |
| C 20in^2 | D 12in^2 |
| | |

8

Find the area of the TRIANGLE by halving the area of the rectangle around it

- | | |
|-------------------|-------------------|
| A 12km^2 | B 56km^2 |
| C 1km^2 | D 9km^2 |
| E 18km^2 | |