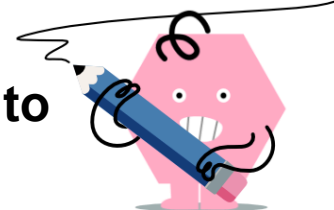
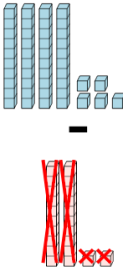
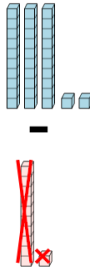
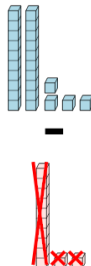
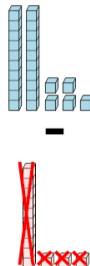
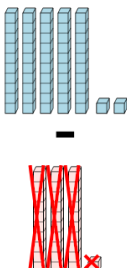
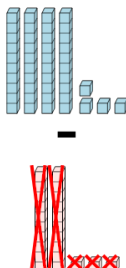
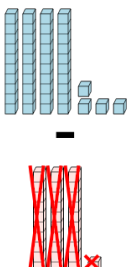
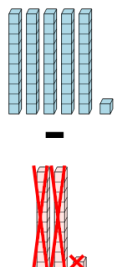




Base 10 Blocks - Subtracting - Picture to Answer, No Borrow - Tens and Ones



1 How many blocks are left if the second group is subtracted from the first? 	A 3264	B 23	C 3
	D 52	E 5	F 46
2 How many blocks are left if the second group is subtracted from the first? 	A 21	B 360	C 328
	D 2037	E 1976	F 3000
3 How many blocks are left if the second group is subtracted from the first? 	A 2	B 19	C 2017
	D 1965	E 12	F 2980
4 How many blocks are left if the second group is subtracted from the first? 	A 16	B 383	C 12
	D 2	E 1502	F 179
5 How many blocks are left if the second group is subtracted from the first? 	A 9	B 21	C 47
	D 127	E 478	F 2723
6 How many blocks are left if the second group is subtracted from the first? 	A 4954	B 19	C 42
	D 21	E 77	F 50
7 How many blocks are left if the second group is subtracted from the first? 	A 2964	B 10	C 4421
	D 13	E 27	F 64
8 How many blocks are left if the second group is subtracted from the first? 	A 398	B 60	C 43
	D 38	E 18	F 30