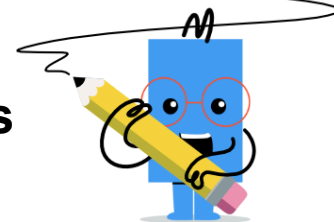




## Cartesian Grid - Vector Between Points (Angle)



<b>1</b> Find the (x,y) change to go from point A to point B on the diagram		A (-2,-4)	B (-4,3)
		C (-3,4)	D (-3,-3)
		E (-3,-4)	F (-4,-3)

<b>2</b> Find the (x,y) change to go from point A to point B on the diagram		A (-3,-3)	B (-4,-4)
		C (3,-4)	D (4,-3)
		E (-3,-5)	F (-3,-4)

<b>3</b> Find the (x,y) change to go from point A to point B on the diagram		A (-1,2)	B (-1,1)
		C (1,2)	D (-2,2)
		E (0,2)	F (2,1)

<b>4</b> Find the (x,y) change to go from point A to point B on the diagram		A (-5,3)	B (-4,3)
		C (-4,4)	D (4,3)
		E (-4,-3)	F (-3,3)

<b>5</b> Find the (x,y) change to go from point A to point B on the diagram		A (3,2)	B (-2,3)
		C (-1,3)	D (-2,-3)
		E (2,3)	F (3,-2)

<b>6</b> Find the (x,y) change to go from point A to point B on the diagram		A (-5,-3)	B (-5,2)
		C (-5,4)	D (-6,3)
		E (-5,3)	F (-4,3)

<b>7</b> Find the (x,y) change to go from point A to point B on the diagram		A (-2,-2)	B (-3,2)
		C (3,-2)	D (-4,-2)
		E (-3,-3)	F (-3,-2)

<b>8</b> Find the (x,y) change to go from point A to point B on the diagram		A (-1,-2)	B (1,-2)
		C (-1,-1)	D (-1,-3)
		E (0,-2)	F (2,-1)