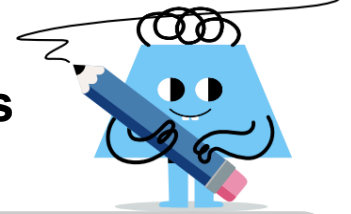
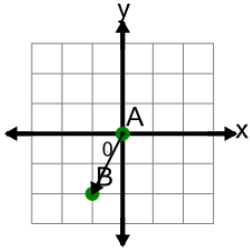




Cartesian Grid - Vector Between Points (Angle)

**1**

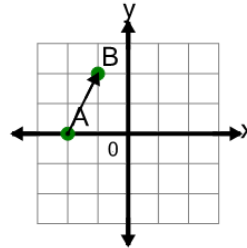
Find the (x,y) change to go from point A to point B on the diagram



A	(2,-1)	B	(-1,-2)
C	(-2,1)	D	(0,-2)
E	(-2,-2)	F	(-1,2)

2

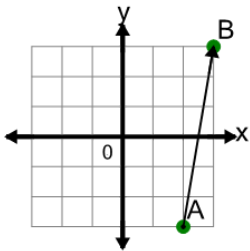
Find the (x,y) change to go from point A to point B on the diagram



A	(2,-1)	B	(0,2)
C	(1,2)	D	(-1,2)
E	(2,2)	F	(1,-2)

3

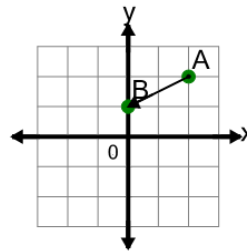
Find the (x,y) change to go from point A to point B on the diagram



A	(1,6)	B	(1,5)
C	(-1,6)	D	(1,7)
E	(-6,1)	F	(1,-6)

4

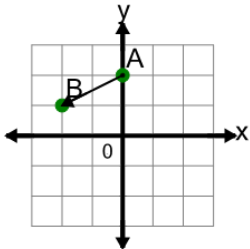
Find the (x,y) change to go from point A to point B on the diagram



A	(-1,-1)	B	(-2,-1)
C	(1,-2)	D	(-1,-2)
E	(-2,-2)	F	(-1,2)

5

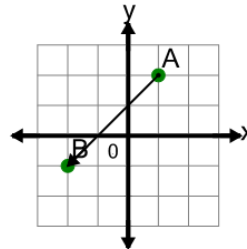
Find the (x,y) change to go from point A to point B on the diagram



A	(-2,-2)	B	(1,-2)
C	(-1,2)	D	(-1,-1)
E	(-2,0)	F	(-2,-1)

6

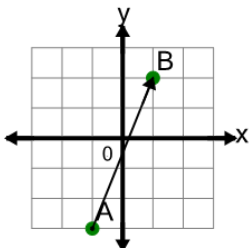
Find the (x,y) change to go from point A to point B on the diagram



A	(-4,-3)	B	(-3,3)
C	(-2,-3)	D	(-3,-3)
E	(3,-3)	F	(-3,-2)

7

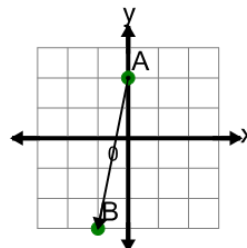
Find the (x,y) change to go from point A to point B on the diagram



A	(-5,2)	B	(2,4)
C	(5,2)	D	(2,6)
E	(3,5)	F	(2,5)

8

Find the (x,y) change to go from point A to point B on the diagram



A	(-1,-4)	B	(-1,-5)
C	(-1,5)	D	(-5,1)
E	(-2,-5)	F	(0,-5)