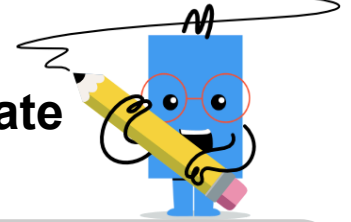
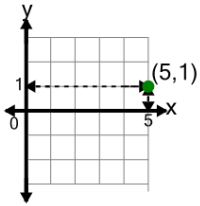


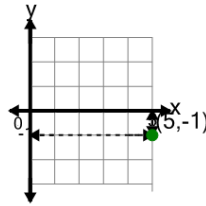


## Cartesian Grid - Meaning of X Coordinate (indicator)

**1**

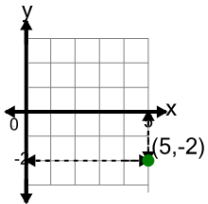
What does the value 5 in the point's coordinate mean?

- A x is equal to 5
- B x is equal to -5
- C y is equal to -5
- D y is equal to 5

**2**

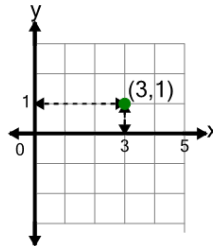
What does the value 5 in the point's coordinate mean?

- A y is equal to -5
- B y is equal to 5
- C x is equal to -5
- D x is equal to 5

**3**

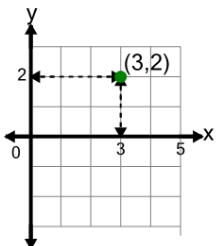
What does the value 5 in the point's coordinate mean?

- A x is equal to -5
- B y is equal to 5
- C x is equal to 5
- D y is equal to -5

**4**

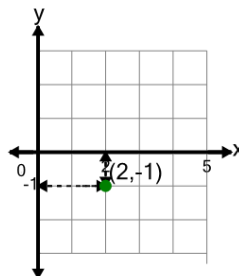
What does the value 3 in the point's coordinate mean?

- A x is equal to 3
- B y is equal to -3
- C x is equal to -3
- D y is equal to 3

**5**

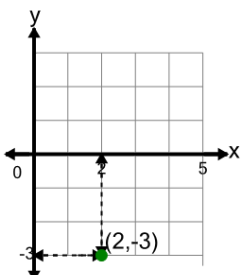
What does the value 3 in the point's coordinate mean?

- A y is equal to -3
- B x is equal to -3
- C y is equal to 3
- D x is equal to 3

**6**

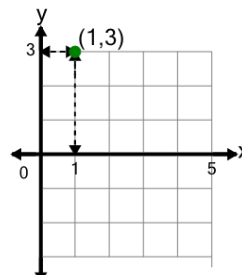
What does the value 2 in the point's coordinate mean?

- A x is equal to -2
- B y is equal to -2
- C x is equal to 2
- D y is equal to 2

**7**

What does the value 2 in the point's coordinate mean?

- A x is equal to -2
- B y is equal to -2
- C y is equal to 2
- D x is equal to 2

**8**

What does the value 1 in the point's coordinate mean?

- A x is equal to -1
- B y is equal to 1
- C y is equal to -1
- D x is equal to 1