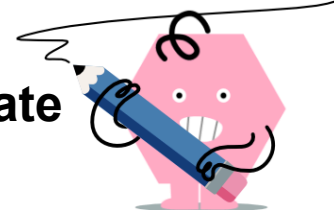
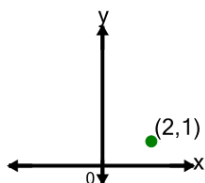


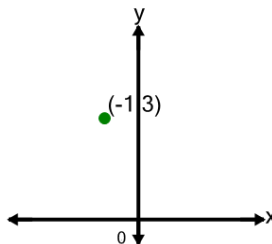


## Cartesian Grid - Meaning of Y Coordinate (no grid)

**1**

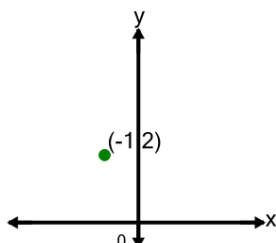
What does the value 1 in the point's coordinate mean?

- A x is equal to 1
- B x is equal to -1
- C y is equal to 1
- D y is equal to -1

**2**

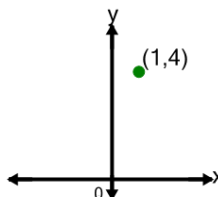
What does the value 3 in the point's coordinate mean?

- A x is equal to 3
- B y is equal to -3
- C y is equal to 3
- D x is equal to -3

**3**

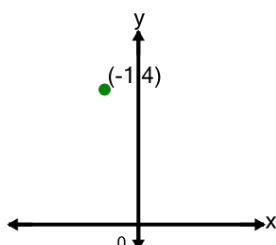
What does the value 2 in the point's coordinate mean?

- A x is equal to 2
- B y is equal to 2
- C x is equal to -2
- D y is equal to -2

**4**

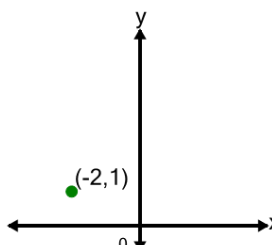
What does the value 4 in the point's coordinate mean?

- A y is equal to -4
- B x is equal to 4
- C x is equal to -4
- D y is equal to 4

**5**

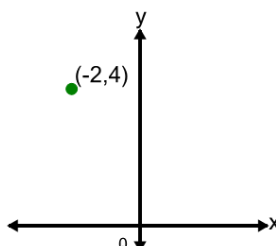
What does the value 4 in the point's coordinate mean?

- A x is equal to -4
- B y is equal to -4
- C y is equal to 4
- D x is equal to 4

**6**

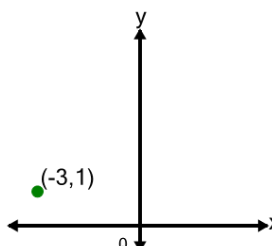
What does the value 1 in the point's coordinate mean?

- A x is equal to 1
- B y is equal to -1
- C x is equal to -1
- D y is equal to 1

**7**

What does the value 4 in the point's coordinate mean?

- A x is equal to 4
- B y is equal to 4
- C y is equal to -4
- D x is equal to -4

**8**

What does the value 1 in the point's coordinate mean?

- A x is equal to -1
- B x is equal to 1
- C y is equal to 1
- D y is equal to -1