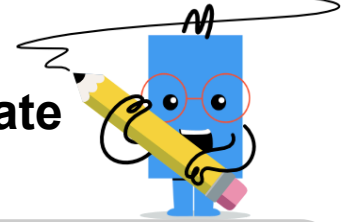
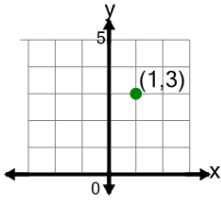




Cartesian Grid - Meaning of Y Coordinate (no indicator)

**1**

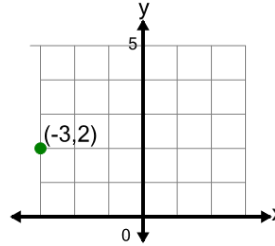
What does the value 3 in the point's coordinate mean?



- A x is equal to -3
- B y is equal to -3
- C y is equal to 3
- D x is equal to 3

2

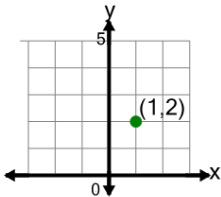
What does the value 2 in the point's coordinate mean?



- A y is equal to -2
- B y is equal to 2
- C x is equal to -2
- D x is equal to 2

3

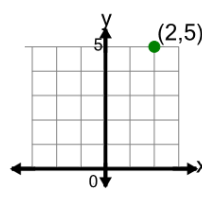
What does the value 2 in the point's coordinate mean?



- A x is equal to -2
- B x is equal to 2
- C y is equal to -2
- D y is equal to 2

4

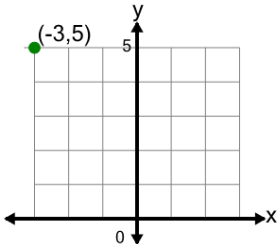
What does the value 5 in the point's coordinate mean?



- A x is equal to 5
- B x is equal to -5
- C y is equal to -5
- D y is equal to 5

5

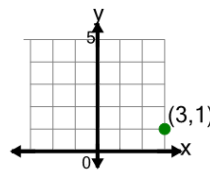
What does the value 5 in the point's coordinate mean?



- A y is equal to 5
- B y is equal to -5
- C x is equal to -5
- D x is equal to 5

6

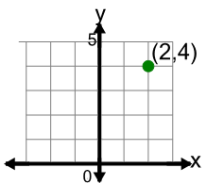
What does the value 1 in the point's coordinate mean?



- A y is equal to 1
- B y is equal to -1
- C x is equal to -1
- D x is equal to 1

7

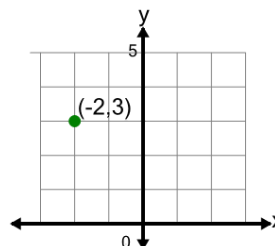
What does the value 4 in the point's coordinate mean?



- A x is equal to 4
- B y is equal to -4
- C y is equal to 4
- D x is equal to -4

8

What does the value 3 in the point's coordinate mean?



- A y is equal to -3
- B x is equal to -3
- C y is equal to 3
- D x is equal to 3