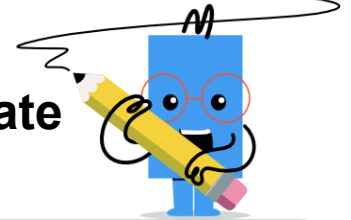
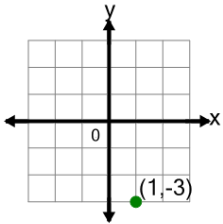


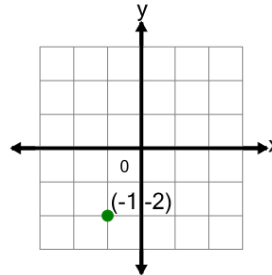


Cartesian Grid - Meaning of Y Coordinate (no indicator)

**1**

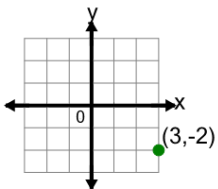
What does the value -3 in the point's coordinate mean?

- A x is equal to -3
- B y is equal to 3
- C x is equal to 3
- D y is equal to -3

2

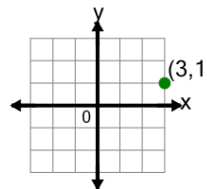
What does the value -2 in the point's coordinate mean?

- A y is equal to 2
- B x is equal to 2
- C x is equal to -2
- D y is equal to -2

3

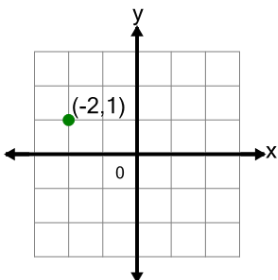
What does the value -2 in the point's coordinate mean?

- A x is equal to 2
- B x is equal to -2
- C y is equal to -2
- D y is equal to 2

4

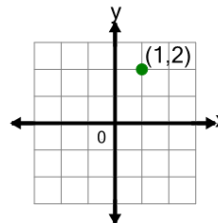
What does the value 1 in the point's coordinate mean?

- A x is equal to -1
- B y is equal to 1
- C y is equal to -1
- D x is equal to 1

5

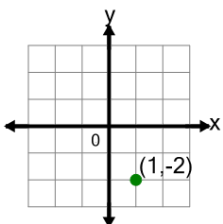
What does the value 1 in the point's coordinate mean?

- A y is equal to -1
- B x is equal to 1
- C y is equal to 1
- D x is equal to -1

6

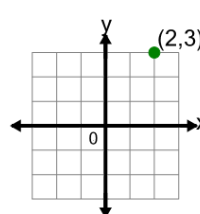
What does the value 2 in the point's coordinate mean?

- A x is equal to 2
- B x is equal to -2
- C y is equal to -2
- D y is equal to 2

7

What does the value -2 in the point's coordinate mean?

- A y is equal to 2
- B x is equal to 2
- C y is equal to -2
- D x is equal to -2

8

What does the value 3 in the point's coordinate mean?

- A y is equal to 3
- B x is equal to -3
- C y is equal to -3
- D x is equal to 3