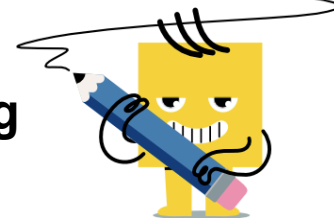
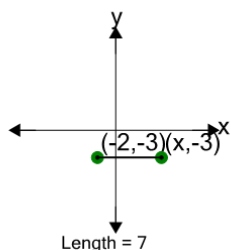


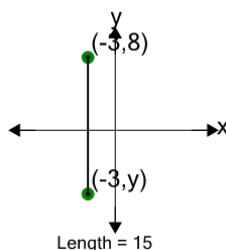


Cartesian Grid - Line Length to Missing Coordinate - Including Negative

**1**

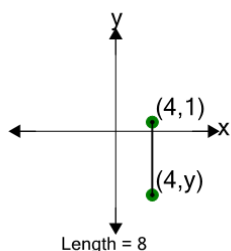
Find the missing value for x if the line is 7 in length

A	7	B	1
C	-5	D	-4
E	11	F	5

2

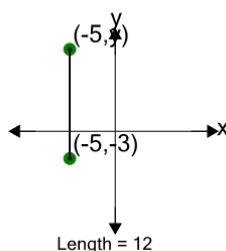
Find the missing value for y if the line is 15 in length

A	-17	B	-7
C	-5	D	0
E	-1	F	-16

3

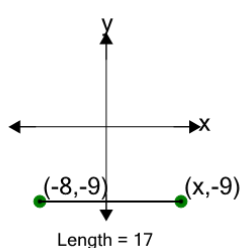
Find the missing value for y if the line is 8 in length

A	-7	B	1
C	-9	D	-17
E	-4	F	-8

4

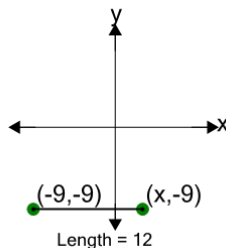
Find the missing value for y if the line is 12 in length

A	11	B	4
C	7	D	9
E	3	F	18

5

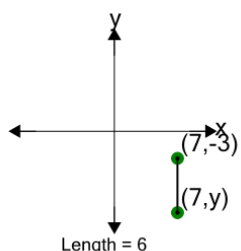
Find the missing value for x if the line is 17 in length

A	2	B	3
C	1	D	9
E	-1	F	18

6

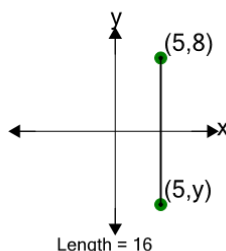
Find the missing value for x if the line is 12 in length

A	0	B	8
C	-1	D	-7
E	3	F	11

7

Find the missing value for y if the line is 6 in length

A	-2	B	-12
C	-16	D	-1
E	-9	F	-10

8

Find the missing value for y if the line is 16 in length

A	-5	B	0
C	1	D	-7
E	-1	F	-8