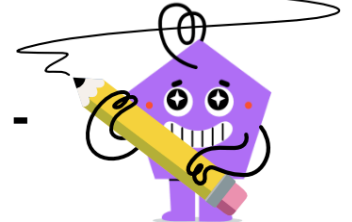
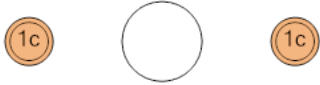




## Coin Math - Less or Greater to Symbol - Pennies



**1** Is the value of the first group less than, greater than, or equal to the second group?



A

&lt;

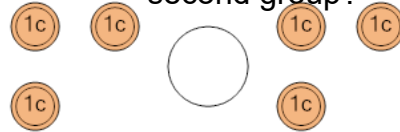
B

=

C

&gt;

**2** Is the value of the first group less than, greater than, or equal to the second group?



A

&lt;

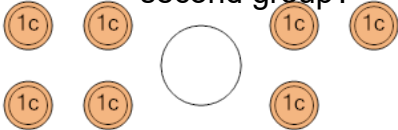
B

=

C

&gt;

**3** Is the value of the first group less than, greater than, or equal to the second group?



A

&lt;

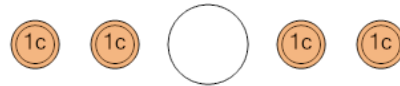
B

=

C

&gt;

**4** Is the value of the first group less than, greater than, or equal to the second group?



A

&lt;

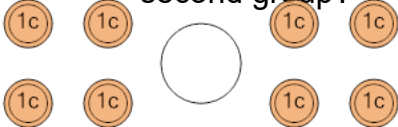
B

=

C

&gt;

**5** Is the value of the first group less than, greater than, or equal to the second group?



A

&lt;

B

=

C

&gt;

**6** Is the value of the first group less than, greater than, or equal to the second group?



A

&lt;

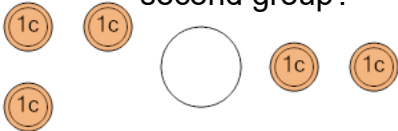
B

=

C

&gt;

**7** Is the value of the first group less than, greater than, or equal to the second group?



A

&lt;

B

=

C

&gt;

**8** Is the value of the first group less than, greater than, or equal to the second group?



A

&lt;

B

=

C

&gt;