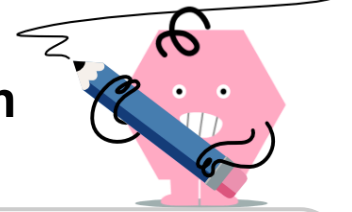
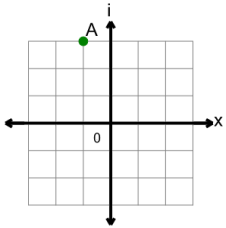


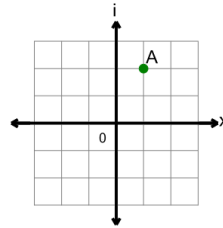


## Complex Plane - Number from Point on Graph

**1**

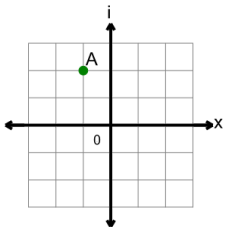
Identify the point labelled 'A' on the complex plane

A $-3 + 3i$	B $3 - 1i$
C $-1 + 3i$	D $3 + 1i$
E $1 + 3i$	F $-1 - 3i$

**2**

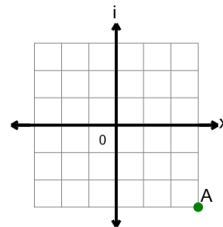
Identify the point labelled 'A' on the complex plane

A $2 + 1i$	B $-1 + 2i$
C $3 + 2i$	D $1 + 2i$
E $1 + 4i$	F $2 - 1i$

**3**

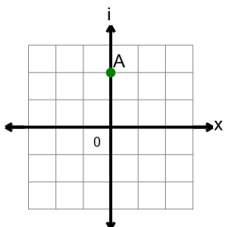
Identify the point labelled 'A' on the complex plane

A $-2 - 1i$	B $-1 - 2i$
C $-1$	D $-1 + 2i$
E $2 + 1i$	F $2 - 1i$

**4**

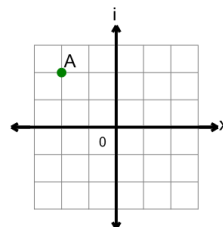
Identify the point labelled 'A' on the complex plane

A $3 - 3i$	B $3 - 1i$
C $-3 - 3i$	D $3 + 3i$
E $-3 + 3i$	F $5 - 3i$

**5**

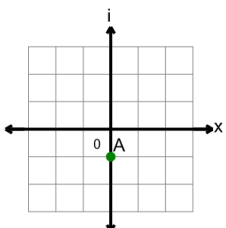
Identify the point labelled 'A' on the complex plane

A $-2i$	B $2 + 2i$
C $-2 + 2i$	D $2i$
E $-2$	F $2$

**6**

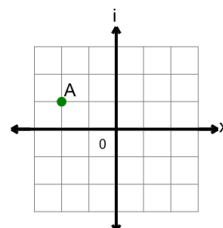
Identify the point labelled 'A' on the complex plane

A $-2 + 4i$	B $-2 + 2i$
C $2 + 2i$	D $-3 + 2i$
E $-2 - 2i$	F $2 - 2i$

**7**

Identify the point labelled 'A' on the complex plane

A $1i$	B $-1i$
C $1$	D $-2i$
E $-2 - 1i$	F $2 - 1i$

**8**

Identify the point labelled 'A' on the complex plane

A $1 - 2i$	B $1 + 2i$
C $-1 - 2i$	D $-2 + 1i$
E $-2 - 1i$	F $-2 + 3i$