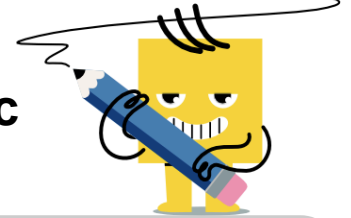
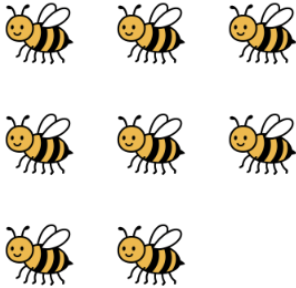




Counting in Groups - Pictures (Specific Image)

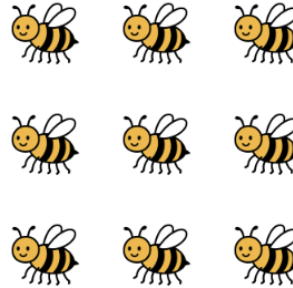


1 Each bee has 6 legs. How many legs in total?



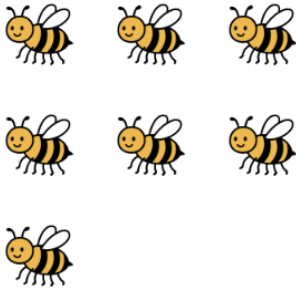
A	B	C
43	48	46
D		
45		

2 Each bee has 6 legs. How many legs in total?



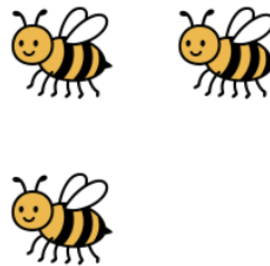
A	B	C
52	51	57
D	E	
56	54	

3 Each bee has 6 legs. How many legs in total?



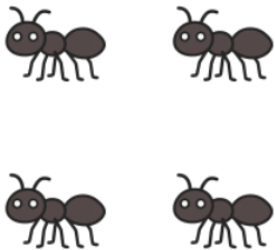
A	B	C
42	45	39
D	E	
38	37	

4 Each bee has 6 legs. How many legs in total?



A	B	C
22	14	16
D		
18		

5 Each ant has 6 legs. How many legs in total?



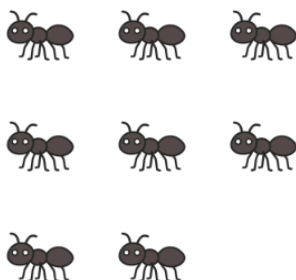
A	B	C
22	26	28
D	E	
24	19	

6 Each ant has 6 legs. How many legs in total?



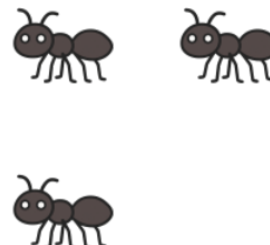
A	B	C
7	15	12

7 Each ant has 6 legs. How many legs in total?



A	B	C
50	44	45
D	E	
48	46	

8 Each ant has 6 legs. How many legs in total?



A	B	C
22	21	18
D		
14		