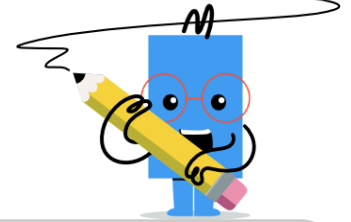
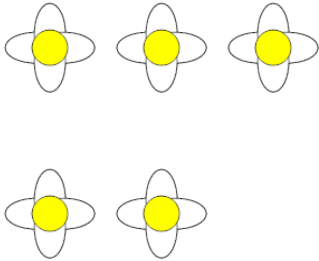




## Counting in Groups - Pictures (Flower Petals)

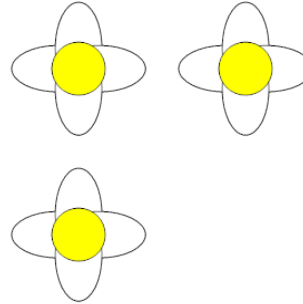


**1** Each flower has 4 petals. How many petals in total?



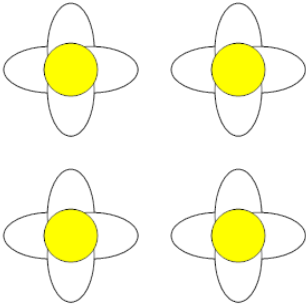
A	B	C
20	17	24
D	E	
15	16	

**2** Each flower has 4 petals. How many petals in total?



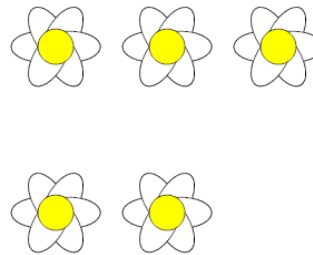
A	B	C
12	14	9
D	E	F
16	10	15

**3** Each flower has 4 petals. How many petals in total?



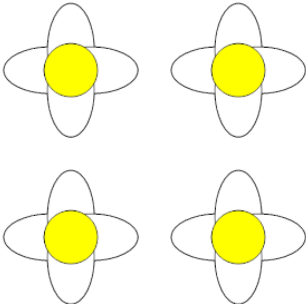
A	B	C
14	16	13
D		
20		

**4** Each flower has 6 petals. How many petals in total?



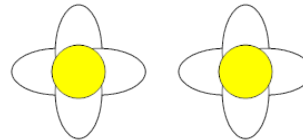
A	B	C
27	32	30
D		
34		

**5** Each flower has 4 petals. How many petals in total?



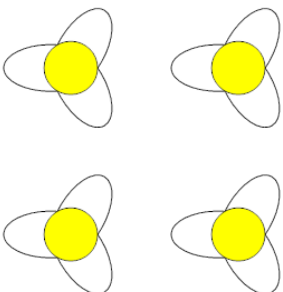
A	B	C
12	16	20
D	E	
11	18	

**6** Each flower has 4 petals. How many petals in total?



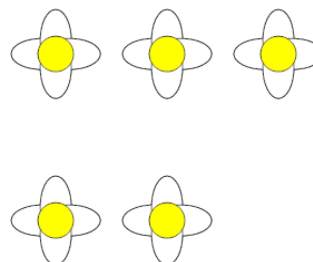
A	B	C
8	5	11
D	E	
10	4	

**7** Each flower has 3 petals. How many petals in total?



A	B	C
10	12	9
D		
15		

**8** Each flower has 4 petals. How many petals in total?



A	B	C
16	20	24
D	E	
15	22	