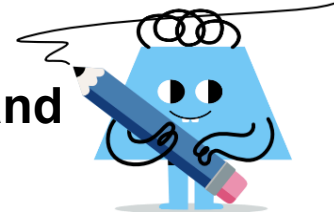




## Counting in Groups - Total to Picture and Count (Specific Image)



1

27 wheels

Each tricycle has 3 wheels. How many tricycles would have this many total wheels?



= 3 wheels

A



x 8

B



x 9

2

21 wheels

Each tricycle has 3 wheels. How many tricycles would have this many total wheels?



= 3 wheels

A



x 6

B



x 7

3

24 leaves

Each clover has 3 leaves. How many clovers would have this many total leaves?



= 3 leaves

A



x 7

B



x 8

4

12 leaves

Each clover has 3 leaves. How many clovers would have this many total leaves?



= 3 leaves

A



x 4

B



x 3

5

9 leaves

Each clover has 3 leaves. How many clovers would have this many total leaves?



= 3 leaves

A



x 2

B



x 3

6

15 wheels

Each tricycle has 3 wheels. How many tricycles would have this many total wheels?



= 3 wheels

A



x 5

B



x 4

7

18 leaves

Each clover has 3 leaves. How many clovers would have this many total leaves?



= 3 leaves

A



x 5

B



x 6

8

6 leaves

Each clover has 3 leaves. How many clovers would have this many total leaves?



= 3 leaves

A



x 2

B



x 3