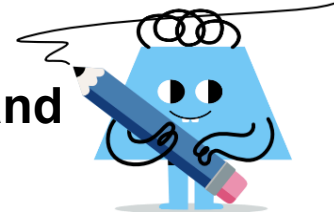




## Counting in Groups - Total to Picture and Count (Specific Image)



1

32 legs

Each cow has 4 legs. How many cows would have this many total legs?



A



B



2

28 legs

Each cow has 4 legs. How many cows would have this many total legs?



A



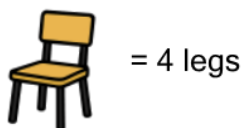
B



3

8 legs

Each chair has 4 legs. How many chairs would have this many total legs?



A



B



4

36 legs

Each cow has 4 legs. How many cows would have this many total legs?



A



B



5

36 legs

Each chair has 4 legs. How many chairs would have this many total legs?



A



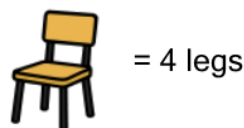
B



6

24 legs

Each chair has 4 legs. How many chairs would have this many total legs?



A



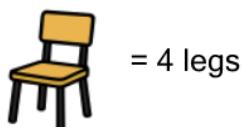
B



7

28 legs

Each chair has 4 legs. How many chairs would have this many total legs?



A



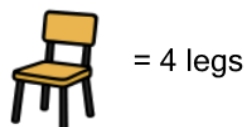
B



8

32 legs

Each chair has 4 legs. How many chairs would have this many total legs?



A



B

