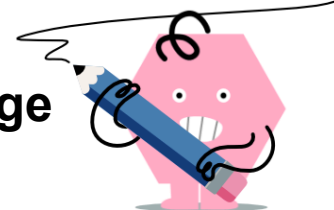


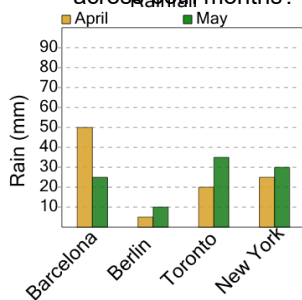


Graphing - Bar Graph (Double) - Average Overall



1

What is the average amount of rain that was measured per city across both months?



A

50

B

40

C

65

D

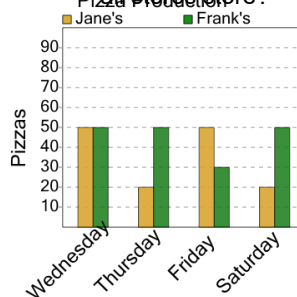
35

E

85

2

What is the average number of pizzas produced each day by all stores?



A

140

B

20

C

120

D

10

E

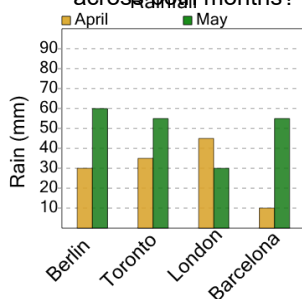
100

F

80

3

What is the average amount of rain that was measured per city across both months?



A

100

B

105

C

80

D

55

E

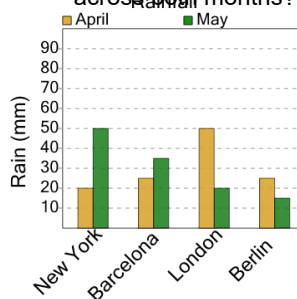
70

F

90

4

What is the average amount of rain that was measured per city across both months?



A

45

B

70

C

35

D

40

E

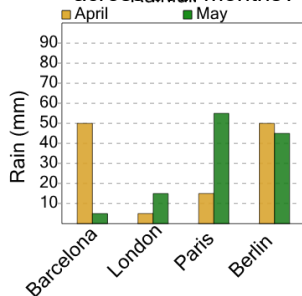
20

F

60

5

What is the average amount of rain that was measured per city across both months?



A

50

B

25

C

85

D

60

E

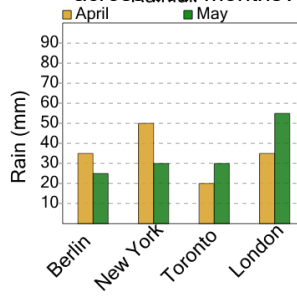
35

F

45

6

What is the average amount of rain that was measured per city across both months?



A

70

B

80

C

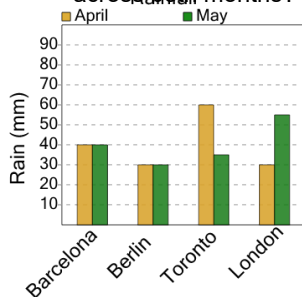
95

D

85

7

What is the average amount of rain that was measured per city across both months?



A

100

B

40

C

95

D

55

E

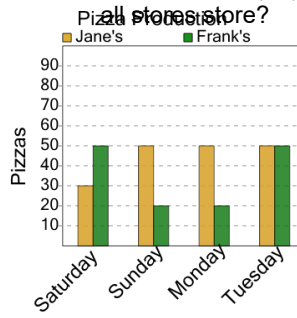
80

F

45

8

What is the average number of pizzas produced each day by all stores?



A

30

B

110

C

50

D

130

E

80

F

40