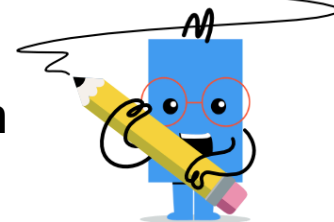


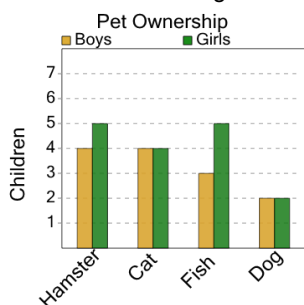


Graphing - Bar Graph (Double) - Which Two are Same



1

What two pets are owned by the same number of girls?



A Dog and Hamster

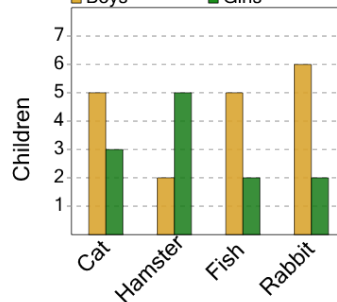
B Fish and Cat

C Hamster and Dog

D Hamster and Fish

2

Pet Ownership



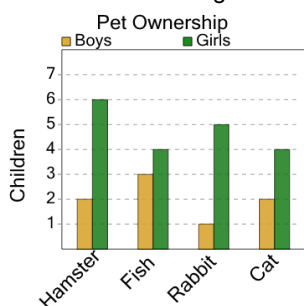
What two pets are owned by the same number of girls?

A Rabbit and Hamster

B Fish and Rabbit

3

What two pets are owned by the same number of girls?



A Cat and Rabbit

B Rabbit and Cat

C Cat and Hamster

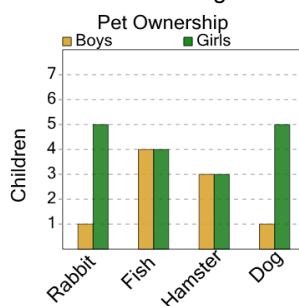
D Fish and Cat

E Rabbit and Fish

F Fish and Rabbit

4

What two pets are owned by the same number of girls?



A Rabbit and Dog

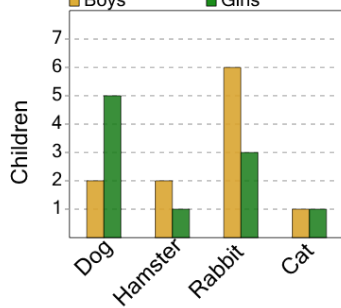
B Fish and Dog

C Hamster and Rabbit

D Fish and Hamster

5

Pet Ownership



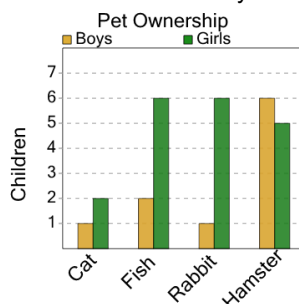
What two pets are owned by the same number of boys?

A Dog and Hamster

B Dog and Cat

6

What two pets are owned by the same number of boys?



A Hamster and Fish

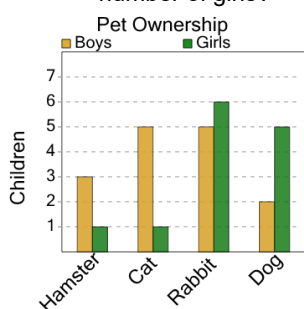
B Cat and Rabbit

C Rabbit and Hamster

D Rabbit and Fish

7

What two pets are owned by the same number of girls?



A Rabbit and Dog

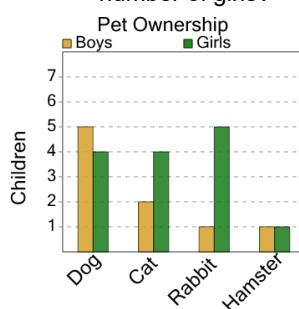
B Hamster and Cat

C Hamster and Dog

D Rabbit and Cat

8

What two pets are owned by the same number of girls?



A Dog and Hamster

B Dog and Rabbit

C Cat and Hamster

D Hamster and Rabbit

E Hamster and Dog

F Dog and Cat