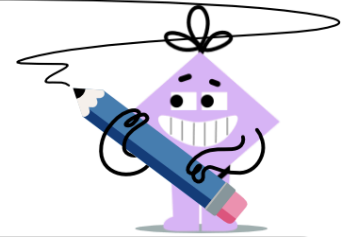




Graphing - Tally Chart - Total of Series



1

How many total children were surveyed?



||||



|||| |



|||| |

A

8

B

16

C

13

D

20

2

How many total children were surveyed?



|||| |



|||| |



|||| |

A

38

B

29

C

37

D

41

E

26

F

34

3

How many total children were surveyed?



|||| |



|||| |



|||| |

A

22

B

25

C

16

D

15

E

28

F

14

4

How many total children were surveyed?



||||



|||| |



|||| |

A

35

B

22

C

26

D

21

E

29

F

27

5

How many total children were surveyed?



|||| |



|||| |



|||| |

A

17

B

31

C

27

D

24

E

29

F

16

6

How many total children were surveyed?



|||| |



||||



||

A

9

B

15

C

10

D

20

E

17

F

11

7

How many total children were surveyed?



|||| |



|||| |



|||| |

A

35

B

34

C

39

D

31

E

43

F

36

8

How many total children were surveyed?



|||| |



|||| |



|||| |

A

28

B

22

C

20

D

33

E

26

F

21