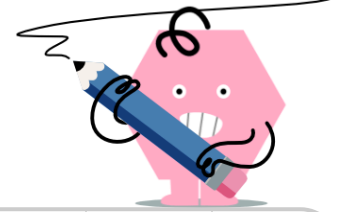




Decimals to Fractions - Powers of Ten



1 Which fraction is equivalent to this decimal? 0.04	A $\frac{4}{0}$	B $\frac{4}{100,000}$	C $\frac{4}{100}$	2 Which fraction is equivalent to this decimal? 0.5	A $\frac{5}{100}$	B $\frac{5}{10,000}$	C 5
	D $\frac{4}{10}$	E $\frac{4}{1,000}$	F 4		D $\frac{5}{0}$	E $\frac{5}{10}$	F $\frac{5}{1,000}$
3 Which fraction is equivalent to this decimal? 0.08	A $\frac{8}{10}$	B $\frac{8}{0}$	C $\frac{8}{100,000}$	4 Which fraction is equivalent to this decimal? 0.05	A $\frac{5}{10,000}$	B $\frac{5}{100}$	C $\frac{5}{100,000}$
	D $\frac{8}{100}$	E 8	F $\frac{8}{1,000}$		D $\frac{5}{10}$	E 5	F $\frac{5}{0}$
5 Which fraction is equivalent to this decimal? 0.7	A $\frac{7}{10}$	B $\frac{7}{1,000}$	C $\frac{7}{0}$	6 Which fraction is equivalent to this decimal? 0.3	A $\frac{3}{1,000}$	B $\frac{3}{0}$	C $\frac{3}{10}$
	D $\frac{7}{10,000}$	E $\frac{7}{100}$	F 7		D $\frac{3}{100}$	E 3	
7 Which fraction is equivalent to this decimal? 0.8	A $\frac{8}{1,000}$	B $\frac{8}{10}$	C 8	8 Which fraction is equivalent to this decimal? 0.07	A 7	B $\frac{7}{0}$	C $\frac{7}{1,000}$
	D $\frac{8}{0}$	E $\frac{8}{10,000}$	F $\frac{8}{100}$		D $\frac{7}{100}$	E $\frac{7}{10}$	F $\frac{7}{100,000}$