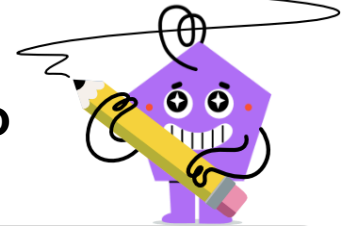




Division by Skip Counting - Problem to Division Expression



1

24 legs

What division shows how many chairs would have 24 legs total?



= 4 legs

A

$24 \div 4$

B

$4 \div 24$

2

16 legs

What division shows how many cows would have 16 legs total?



= 4 legs

A

$4 \div 16$

B

$16 \div 4$

3

16 legs

What division shows how many chairs would have 16 legs total?



= 4 legs

A

$16 \div 4$

B

$4 \div 16$

4

20 legs

What division shows how many chairs would have 20 legs total?



= 4 legs

A

$20 \div 4$

B

$4 \div 20$

5

12 legs

What division shows how many chairs would have 12 legs total?



= 4 legs

A

$12 \div 4$

B

$4 \div 12$

6

28 legs

What division shows how many cows would have 28 legs total?



= 4 legs

A

$4 \div 28$

B

$28 \div 4$

7

8 legs

What division shows how many cows would have 8 legs total?



= 4 legs

A

$4 \div 8$

B

$8 \div 4$

8

8 legs

What division shows how many chairs would have 8 legs total?



= 4 legs

A

$8 \div 4$

B

$4 \div 8$