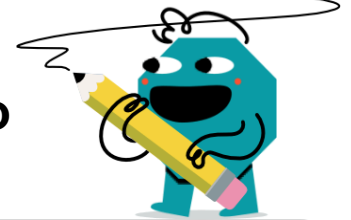




Division by Skip Counting - Problem to Division Expression



1

81 panes

What division shows how many windows would have 81 panes total?



= 9 panes

A

$9 \div 81$

B

$81 \div 9$

2

54 muffins

What division shows how many trays would have 54 muffins total?



= 9 muffins

A

$54 \div 9$

B

$9 \div 54$

3

45 panes

What division shows how many windows would have 45 panes total?



= 9 panes

A

$9 \div 45$

B

$45 \div 9$

4

72 panes

What division shows how many windows would have 72 panes total?



= 9 panes

A

$9 \div 72$

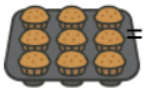
B

$72 \div 9$

5

45 muffins

What division shows how many trays would have 45 muffins total?



= 9 muffins

A

$9 \div 45$

B

$45 \div 9$

6

18 muffins

What division shows how many trays would have 18 muffins total?



= 9 muffins

A

$18 \div 9$

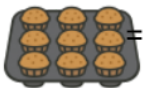
B

$9 \div 18$

7

27 muffins

What division shows how many trays would have 27 muffins total?



= 9 muffins

A

$27 \div 9$

B

$9 \div 27$

8

54 panes

What division shows how many windows would have 54 panes total?



= 9 panes

A

$54 \div 9$

B

$9 \div 54$