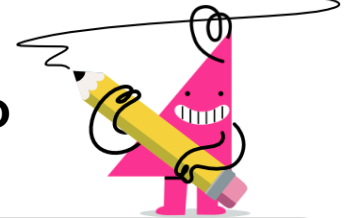


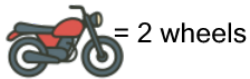


## Division by Skip Counting - Problem to Quotient



**1** How many motorbikes would have 6 wheels total?

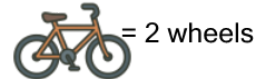
6 wheels



A	B	C
0	6	3
D	E	
1	5	

**2** How many bikes would have 14 wheels total?

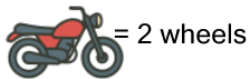
14 wheels



A	B	C
4	5	3
D	E	
7	10	

**3** How many motorbikes would have 18 wheels total?

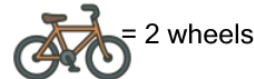
18 wheels



A	B	C
13	9	4
D	E	
11	6	

**4** How many bikes would have 12 wheels total?

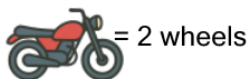
12 wheels



A	B	C
3	9	6
D	E	
2	10	

**5** How many motorbikes would have 8 wheels total?

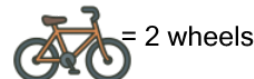
8 wheels



A	B	C
1	4	2
D		
7		

**6** How many bikes would have 6 wheels total?

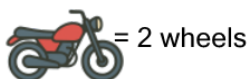
6 wheels



A	B	C
5	0	3
D	E	
1	7	

**7** How many motorbikes would have 12 wheels total?

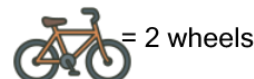
12 wheels



A	B	C
3	6	2
D	E	
9	10	

**8** How many bikes would have 10 wheels total?

10 wheels



A	B	C
5	2	0
D	E	
7	8	