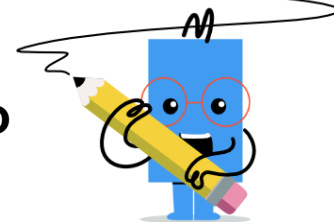




## Division by Skip Counting - Problem to Quotient



**1** How many clovers would have 12 leaves total?

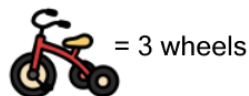
12 leaves



A	B	C
0	2	1
D	E	
4	8	

**2** How many tricycles would have 6 wheels total?

6 wheels



A	B	C
6	5	0
D	E	
2	4	

**3** How many clovers would have 21 leaves total?

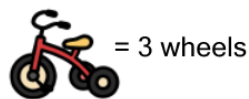
21 leaves



A	B	C
10	4	5
D	E	
9	7	

**4** How many tricycles would have 27 wheels total?

27 wheels



A	B	C
5	7	12
D	E	
9	11	

**5** How many clovers would have 18 leaves total?

18 leaves



A	B	C
3	10	8
D	E	
2	6	

**6** How many clovers would have 9 leaves total?

9 leaves



A	B	C
3	5	1
D	E	
0	6	

**7** How many clovers would have 6 leaves total?

6 leaves



A	B	C
2	4	0
D		
5		

**8** How many clovers would have 15 leaves total?

15 leaves



A	B	C
2	3	5
D	E	
1	0	