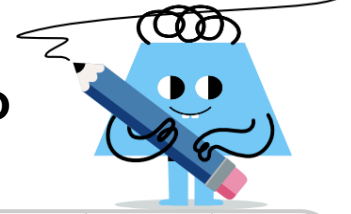




Division by Skip Counting - Problem to Quotient



1

How many windows would have 36 panes total?

36 panes



= 9 panes

A

2

B

0

C

6

D

4

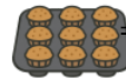
E

8

2

How many trays would have 81 muffins total?

81 muffins



= 9 muffins

A

9

B

11

C

7

D

5

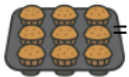
E

13

3

How many trays would have 72 muffins total?

72 muffins



= 9 muffins

A

6

B

12

C

8

D

3

E

5

4

How many trays would have 54 muffins total?

54 muffins



= 9 muffins

A

9

B

3

C

6

D

1

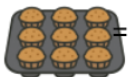
E

4

5

How many trays would have 18 muffins total?

18 muffins



= 9 muffins

A

5

B

0

C

2

D

4

E

6

6

How many windows would have 63 panes total?

63 panes



= 9 panes

A

2

B

10

C

7

D

11

E

3

7

How many windows would have 72 panes total?

72 panes



= 9 panes

A

8

B

6

C

5

D

4

E

3

8

How many windows would have 45 panes total?

45 panes



= 9 panes

A

5

B

8

C

2

D

3

E

0