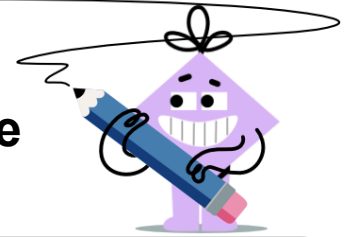




## Division by Skip Counting - Full Picture Set to Division Expression



1



12



6

What division shows how many ants would have 12 legs total?

A

$12 \div 6$

B

$6 \div 12$

2



48



42



36

What division shows how many bees would have 48 legs total?



30



24



18



12



6

A

$48 \div 6$

B

$6 \div 48$

3



30



24



18

What division shows how many bees would have 30 legs total?



12



6

A

$6 \div 30$

B

$30 \div 6$

4



36



30



24

What division shows how many bees would have 36 legs total?



18



12



6

A

$36 \div 6$

B

$6 \div 36$

5



36



30



24

What division shows how many ants would have 36 legs total?



18



12



6

A

$36 \div 6$

B

$6 \div 36$

6



24



18

What division shows how many bees would have 24 legs total?



12



6

A

$24 \div 6$

B

$6 \div 24$

7



24



18

What division shows how many ants would have 24 legs total?



12



6

A

$24 \div 6$

B

$6 \div 24$

8



48



42



36

What division shows how many ants would have 48 legs total?



30



24



18



12



6

A

$6 \div 48$

B

$48 \div 6$