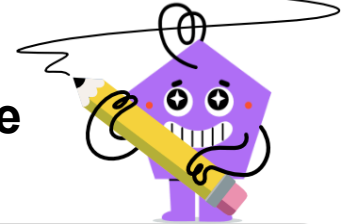
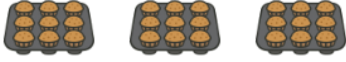




## Division by Skip Counting - Full Picture Set to Division Expression



1

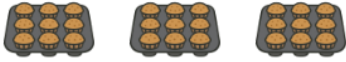


72

63

54

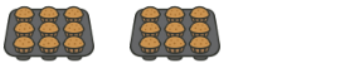
What division shows how many trays would have 72 muffins total?



45

36

27



18

9

A  $9 \div 72$  B  $72 \div 9$

2



27



18

What division shows how many windows would have 27 panes total?



9

A  $27 \div 9$  B  $9 \div 27$

3



18

9

What division shows how many trays would have 18 muffins total?

A  $18 \div 9$  B  $9 \div 18$

4



45



36



27

What division shows how many trays would have 45 muffins total?



18



9

A  $9 \div 45$  B  $45 \div 9$

5



81

72

63

What division shows how many windows would have 81 panes total?



54

45

36



27

18

9

A  $9 \div 81$  B  $81 \div 9$

6



54



45



36

What division shows how many windows would have 54 panes total?



27



18



9

A  $9 \div 54$  B  $54 \div 9$

7



45

36

27

What division shows how many windows would have 45 panes total?



18

9

A  $9 \div 45$  B  $45 \div 9$

8



18



9

What division shows how many windows would have 18 panes total?

A  $9 \div 18$  B  $18 \div 9$