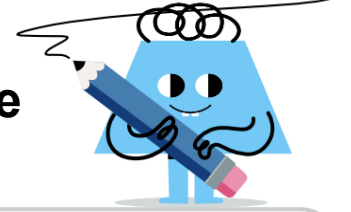




Division by Skip Counting - Full Picture Set to Long Division Expression



1



36



27

What division shows how many windows would have 36 panes total?



18



9

A

$$36 \overline{)99}$$

B

$$9 \overline{)36}$$

2



45



36



27

What division shows how many trays would have 45 muffins total?



18



9

A

$$9 \overline{)45}$$

B

$$45 \overline{)9}$$

3



54



45



36

What division shows how many windows would have 54 panes total?



27



18



9

A

$$9 \overline{)54}$$

B

$$54 \overline{)9}$$

4



72



63



54

What division shows how many windows would have 72 panes total?



45



36



27



18



9

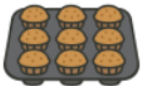
A

$$9 \overline{)72}$$

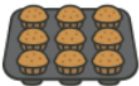
B

$$72 \overline{)9}$$

5

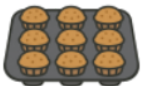


27



18

What division shows how many trays would have 27 muffins total?



9

A

$$27 \overline{)9}$$

B

$$9 \overline{)27}$$

6



27



18

What division shows how many windows would have 27 panes total?



9

A

$$27 \overline{)9}$$

B

$$9 \overline{)27}$$

7



54



45



36

What division shows how many trays would have 54 muffins total?



27



18



9

A

$$9 \overline{)54}$$

B

$$54 \overline{)9}$$

8



72



63



54

What division shows how many trays would have 72 muffins total?



45



36



27



18



9

A

$$72 \overline{)9}$$

B

$$9 \overline{)72}$$