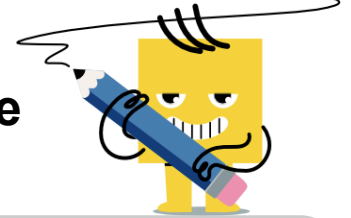
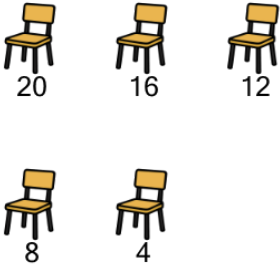




## Division by Skip Counting - Full Picture Set to Quotient

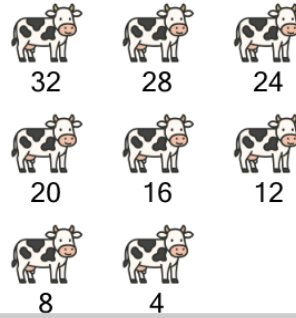


**1** Skip count by 4. How many chairs would have 20 legs total?



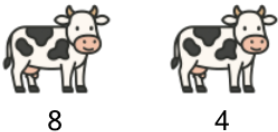
A	B	C
1	8	5
D	E	
9	7	

**2** Skip count by 4. How many cows would have 32 legs total?



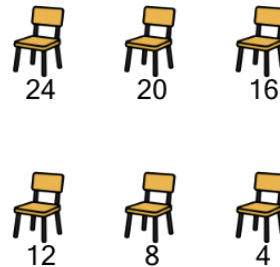
A	B	C
12	11	8
D	E	
10	5	

**3** Skip count by 4. How many cows would have 8 legs total?



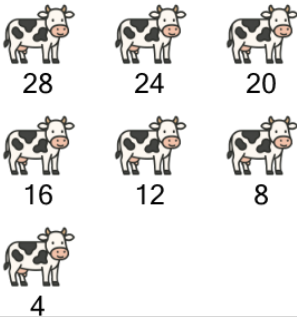
A	B	C
4	6	2
D	E	
0	5	

**4** Skip count by 4. How many chairs would have 24 legs total?



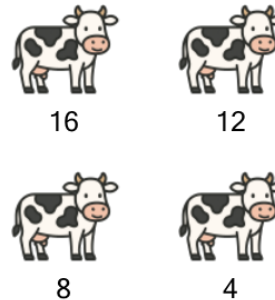
A	B	C
8	2	3
D	E	
6	9	

**5** Skip count by 4. How many cows would have 28 legs total?



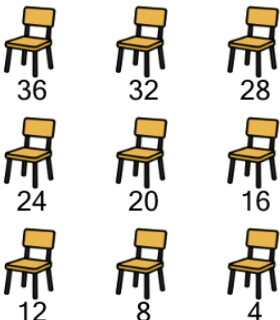
A	B	C
9	11	10
D	E	
7	4	

**6** Skip count by 4. How many cows would have 16 legs total?



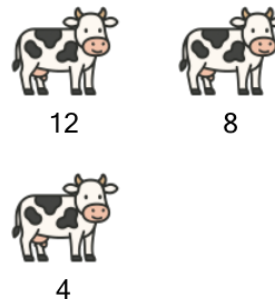
A	B	C
2	0	7
D	E	
8	4	

**7** Skip count by 4. How many chairs would have 36 legs total?



A	B	C
9	12	13
D	E	
5	7	

**8** Skip count by 4. How many cows would have 12 legs total?



A	B	C
5	0	1
D	E	
3	7	