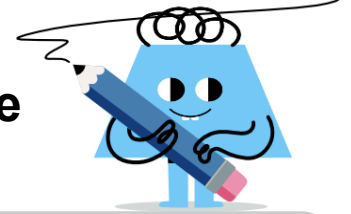




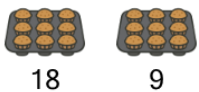
Division by Skip Counting - Full Picture Set to Quotient



1 Skip count by 9. How many trays would have 45 muffins total?



45 36 27



18 9

A B C
5 0 7

D E
9 1

2 Skip count by 9. How many trays would have 18 muffins total?



18 9

A B C
0 5 2

3 Skip count by 9. How many trays would have 36 muffins total?



36 27



18 9

A B C
4 1 2

D E
6

4 Skip count by 9. How many windows would have 54 panes total?



54 45 36



27 18 9

A B C
9 6 4

D E
1 3

5 Skip count by 9. How many trays would have 27 muffins total?



27 18



9

A B C
6 1 0

D E
3 5

6 Skip count by 9. How many trays would have 72 muffins total?



72 63 54



45 36 27



18 9

A B C
4 3 6

D E
8 12

7 Skip count by 9. How many trays would have 81 muffins total?



81 72 63



54 45 36



27 18 9

A B C
13 4 7

D E
9 5

8 Skip count by 9. How many windows would have 63 panes total?



63 54 45



36 27 18



9

A B C
7 9 3

D E
11 2