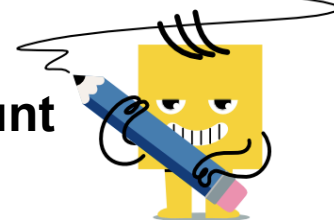




Division Car Model - Total and Car Count to Per Car - No Remainder (1 Digit)

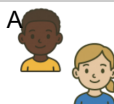


1

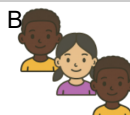


27 riders are split evenly among 9 cars. How many per car?

27 riders 9 cars



2 per car



3 per car

2



32 riders are split evenly among 8 cars. How many per car?

32 riders 8 cars



4 per car



5 per car

3



27 riders are split evenly among 3 buses. How many per bus?

27 riders 3 buses



8 per bus



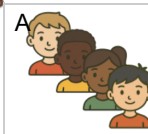
9 per bus

4

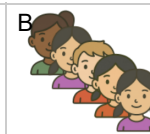


36 riders are split evenly among 9 cars. How many per car?

36 riders 9 cars



4 per car



5 per car

5



42 riders are split evenly among 7 buses. How many per bus?

42 riders 7 buses



7 per bus



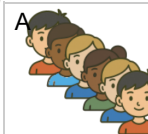
6 per bus

6

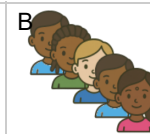


35 riders are split evenly among 7 cars. How many per car?

35 riders 7 cars



6 per bus



5 per car

7



49 riders are split evenly among 7 buses. How many per bus?

49 riders 7 buses



7 per bus



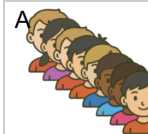
8 per bus

8

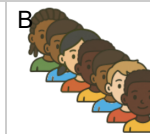


40 riders are split evenly among 5 buses. How many per bus?

40 riders 5 buses



8 per bus



7 per bus