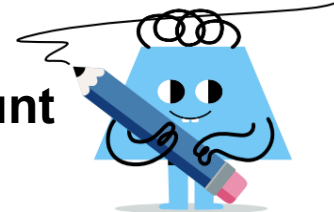




Division Car Model - Total and Car Count to Per Car - With Remainder (1 Digit)



1



54 riders 7 buses

54 riders are split evenly among 7 buses. How many per bus (ignoring any remaining)?



6 per bus



7 per bus

2

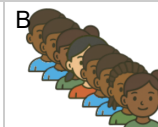


48 riders 5 buses

48 riders are split evenly among 5 buses. How many per bus (ignoring any remaining)?



9 per bus



8 per bus

3

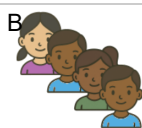


36 riders 7 cars

36 riders are split evenly among 7 cars. How many per car (ignoring any remaining)?



5 per car



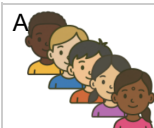
4 per car

4

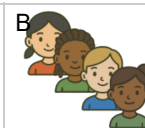


29 riders 7 cars

29 riders are split evenly among 7 cars. How many per car (ignoring any remaining)?



5 per car



4 per car

5

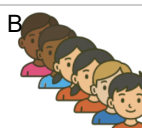


38 riders 7 cars

38 riders are split evenly among 7 cars. How many per car (ignoring any remaining)?



5 per car



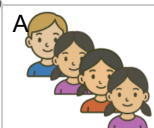
6 per car

6

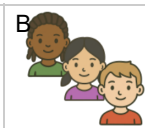


29 riders 9 cars

29 riders are split evenly among 9 cars. How many per car (ignoring any remaining)?



4 per car



3 per car

7



52 riders 7 buses

52 riders are split evenly among 7 buses. How many per bus (ignoring any remaining)?



6 per bus



7 per bus

8



51 riders 7 buses

51 riders are split evenly among 7 buses. How many per bus (ignoring any remaining)?



6 per bus



7 per bus