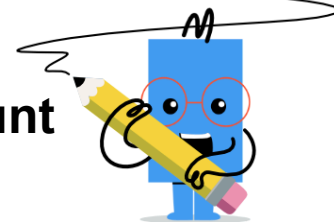




Division Car Model - Total and Car Count to Remainder (1 Digit)

**1**

5 riders 2 cars

5 riders are split evenly among 2 cars. How many riders REMAIN once the cars are evenly filled?



2 remaining



1 remaining

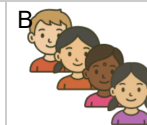
2

22 riders 3 buses

22 riders are split evenly among 3 buses. How many riders REMAIN once the buses are evenly filled?



5 remaining



4 remaining

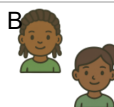
3

14 riders 3 cars

14 riders are split evenly among 3 cars. How many riders REMAIN once the cars are evenly filled?



1 remaining

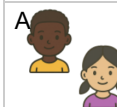


2 remaining

4

10 riders 3 cars

10 riders are split evenly among 3 cars. How many riders REMAIN once the cars are evenly filled?



2 remaining



1 remaining

5

26 riders 6 cars

26 riders are split evenly among 6 cars. How many riders REMAIN once the cars are evenly filled?



2 remaining



3 remaining

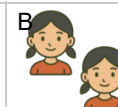
6

22 riders 7 cars

22 riders are split evenly among 7 cars. How many riders REMAIN once the cars are evenly filled?



1 remaining

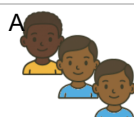


2 remaining

7

15 riders 3 cars

15 riders are split evenly among 3 cars. How many riders REMAIN once the cars are evenly filled?



3 remaining

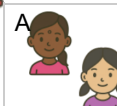


4 remaining

8

19 riders 9 cars

19 riders are split evenly among 9 cars. How many riders REMAIN once the cars are evenly filled?



2 remaining



1 remaining