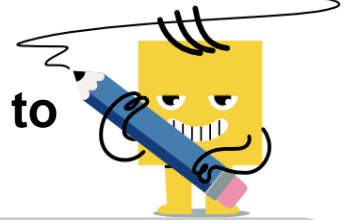




Division Expression Display - Fraction to Long Division



1

$$\begin{array}{r} 77 \\ \hline 11 \end{array}$$

Which long division is the same as this?

A	B
$11 \overline{)77}$	$77 \overline{)11}$

2

$$\begin{array}{r} 35 \\ \hline 7 \end{array}$$

Which long division is the same as this?

A	B
$7 \overline{)35}$	$35 \overline{)7}$

3

$$\begin{array}{r} 21 \\ \hline 3 \end{array}$$

Which long division is the same as this?

A	B
$3 \overline{)21}$	$21 \overline{)3}$

4

$$\begin{array}{r} 77 \\ \hline 7 \end{array}$$

Which long division is the same as this?

A	B
$7 \overline{)77}$	$77 \overline{)7}$

5

$$\begin{array}{r} 22 \\ \hline 11 \end{array}$$

Which long division is the same as this?

A	B
$22 \overline{)11}$	$11 \overline{)22}$

6

$$\begin{array}{r} 6 \\ \hline 3 \end{array}$$

Which long division is the same as this?

A	B
$6 \overline{)3}$	$3 \overline{)6}$

7

$$\begin{array}{r} 55 \\ \hline 11 \end{array}$$

Which long division is the same as this?

A	B
$11 \overline{)55}$	$55 \overline{)11}$

8

$$\begin{array}{r} 33 \\ \hline 3 \end{array}$$

Which long division is the same as this?

A	B
$33 \overline{)3}$	$3 \overline{)33}$