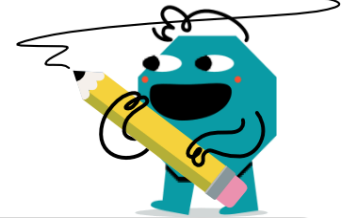




## Division Expression Display - Long Division to Division Sign



1

$$3 \overline{)33}$$

Which division is the same as this?

A	B
$33 \div 3$	$3 \div 33$

2

$$5 \overline{)35}$$

Which division is the same as this?

A	B
$5 \div 35$	$35 \div 5$

3

$$2 \overline{)14}$$

Which division is the same as this?

A	B
$14 \div 2$	$2 \div 14$

4

$$7 \overline{)28}$$

Which division is the same as this?

A	B
$7 \div 28$	$28 \div 7$

5

$$11 \overline{)55}$$

Which division is the same as this?

A	B
$55 \div 11$	$11 \div 55$

6

$$5 \overline{)15}$$

Which division is the same as this?

A	B
$5 \div 15$	$15 \div 5$

7

$$3 \overline{)12}$$

Which division is the same as this?

A	B
$3 \div 12$	$12 \div 3$

8

$$2 \overline{)12}$$

Which division is the same as this?

A	B
$2 \div 12$	$12 \div 2$