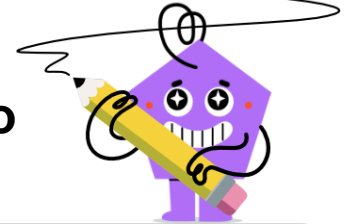




Division Expression Display - Words to Fraction



1 Which fraction is the same as this? 33 split into 3 groups

A

$$\frac{3}{33}$$

B

$$\frac{33}{3}$$

2 Which fraction is the same as this? 22 split into 2 groups

A

$$\frac{2}{22}$$

B

$$\frac{22}{2}$$

3 Which fraction is the same as this? 28 split into 7 groups

A

$$\frac{7}{28}$$

B

$$\frac{28}{7}$$

4 Which fraction is the same as this? 6 split into 2 groups

A

$$\frac{6}{2}$$

B

$$\frac{2}{6}$$

5 Which fraction is the same as this? 14 split into 7 groups

A

$$\frac{7}{14}$$

B

$$\frac{14}{7}$$

6 Which fraction is the same as this? 77 split into 7 groups

A

$$\frac{77}{7}$$

B

$$\frac{7}{77}$$

7 Which fraction is the same as this? 21 split into 3 groups

A

$$\frac{3}{21}$$

B

$$\frac{21}{3}$$

8 Which fraction is the same as this? 21 split into 7 groups

A

$$\frac{21}{7}$$

B

$$\frac{7}{21}$$