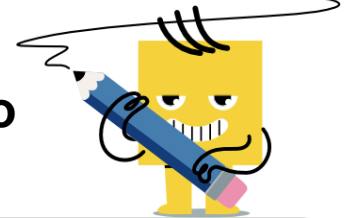




Division Expression Display - Words to Long Division



1 Which long division is the same as this?

12 split into 2 groups

A

$$12 \overline{)2}$$

B

$$2 \overline{)12}$$

2 Which long division is the same as this?

28 split into 2 groups

A

$$2 \overline{)28}$$

B

$$28 \overline{)2}$$

3 Which long division is the same as this?

22 split into 11 groups

A

$$11 \overline{)22}$$

B

$$22 \overline{)11}$$

4 Which long division is the same as this?

55 split into 5 groups

A

$$5 \overline{)55}$$

B

$$55 \overline{)5}$$

5 Which long division is the same as this?

77 split into 7 groups

A

$$7 \overline{)77}$$

B

$$77 \overline{)7}$$

6 Which long division is the same as this?

55 split into 11 groups

A

$$11 \overline{)55}$$

B

$$55 \overline{)11}$$

7 Which long division is the same as this?

22 split into 2 groups

A

$$2 \overline{)22}$$

B

$$22 \overline{)2}$$

8 Which long division is the same as this?

14 split into 7 groups

A

$$7 \overline{)14}$$

B

$$14 \overline{)7}$$