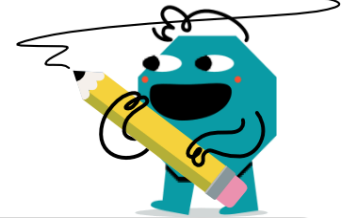




Division - Power of Ten Equivalent - Decimals



1

Make this problem simpler by adding or removing powers of ten from top and bottom.

$$\begin{array}{r} 0.1 \\ \hline 0.8 \end{array}$$

A $\begin{array}{r} 1 \\ \hline 800 \end{array}$

B $\begin{array}{r} 10 \\ \hline 80 \end{array}$

C $\begin{array}{r} 10 \\ \hline 8 \end{array}$

D $\begin{array}{r} 1 \\ \hline 8 \end{array}$

E $\begin{array}{r} 1 \\ \hline 80 \end{array}$

F $\begin{array}{r} 100 \\ \hline 8 \end{array}$

2

Make this problem simpler by adding or removing powers of ten from top and bottom.

$$\begin{array}{r} 0.6 \\ \hline 0.8 \end{array}$$

A $\begin{array}{r} 6 \\ \hline 80 \end{array}$

B $\begin{array}{r} 600 \\ \hline 8 \end{array}$

C $\begin{array}{r} 60 \\ \hline 8 \end{array}$

D $\begin{array}{r} 60 \\ \hline 80 \end{array}$

E $\begin{array}{r} 6 \\ \hline 8 \end{array}$

F $\begin{array}{r} 6 \\ \hline 800 \end{array}$

3

Make this problem simpler by adding or removing powers of ten from top and bottom.

$$\begin{array}{r} 0.5 \\ \hline 0.3 \end{array}$$

A $\begin{array}{r} 50 \\ \hline 3 \end{array}$

B $\begin{array}{r} 50 \\ \hline 30 \end{array}$

C $\begin{array}{r} 5 \\ \hline 30 \end{array}$

D $\begin{array}{r} 5 \\ \hline 3 \end{array}$

E $\begin{array}{r} 500 \\ \hline 3 \end{array}$

F $\begin{array}{r} 5 \\ \hline 300 \end{array}$

4

Make this problem simpler by adding or removing powers of ten from top and bottom.

$$\begin{array}{r} 0.4 \\ \hline 0.3 \end{array}$$

A $\begin{array}{r} 40 \\ \hline 3 \end{array}$

B $\begin{array}{r} 4 \\ \hline 300 \end{array}$

C $\begin{array}{r} 4 \\ \hline 30 \end{array}$

D $\begin{array}{r} 40 \\ \hline 30 \end{array}$

E $\begin{array}{r} 400 \\ \hline 3 \end{array}$

F $\begin{array}{r} 4 \\ \hline 3 \end{array}$

5

Make this problem simpler by adding or removing powers of ten from top and bottom.

$$\begin{array}{r} 0.3 \\ \hline 0.6 \end{array}$$

A $\begin{array}{r} 3 \\ \hline 600 \end{array}$

B $\begin{array}{r} 30 \\ \hline 6 \end{array}$

C $\begin{array}{r} 300 \\ \hline 6 \end{array}$

D $\begin{array}{r} 3 \\ \hline 6 \end{array}$

E $\begin{array}{r} 3 \\ \hline 60 \end{array}$

F $\begin{array}{r} 30 \\ \hline 60 \end{array}$

6

Make this problem simpler by adding or removing powers of ten from top and bottom.

$$\begin{array}{r} 0.9 \\ \hline 0.6 \end{array}$$

A $\begin{array}{r} 90 \\ \hline 6 \end{array}$

B $\begin{array}{r} 9 \\ \hline 60 \end{array}$

C $\begin{array}{r} 90 \\ \hline 60 \end{array}$

D $\begin{array}{r} 900 \\ \hline 6 \end{array}$

E $\begin{array}{r} 9 \\ \hline 600 \end{array}$

F $\begin{array}{r} 9 \\ \hline 6 \end{array}$

7

Make this problem simpler by adding or removing powers of ten from top and bottom.

$$\begin{array}{r} 0.8 \\ \hline 0.9 \end{array}$$

A $\begin{array}{r} 80 \\ \hline 9 \end{array}$

B $\begin{array}{r} 8 \\ \hline 9 \end{array}$

C $\begin{array}{r} 800 \\ \hline 9 \end{array}$

D $\begin{array}{r} 80 \\ \hline 90 \end{array}$

E $\begin{array}{r} 8 \\ \hline 900 \end{array}$

F $\begin{array}{r} 8 \\ \hline 90 \end{array}$

8

Make this problem simpler by adding or removing powers of ten from top and bottom.

$$\begin{array}{r} 0.7 \\ \hline 0.4 \end{array}$$

A $\begin{array}{r} 70 \\ \hline 40 \end{array}$

B $\begin{array}{r} 70 \\ \hline 4 \end{array}$

C $\begin{array}{r} 7 \\ \hline 4 \end{array}$

D $\begin{array}{r} 7 \\ \hline 400 \end{array}$

E $\begin{array}{r} 700 \\ \hline 4 \end{array}$

F $\begin{array}{r} 7 \\ \hline 40 \end{array}$