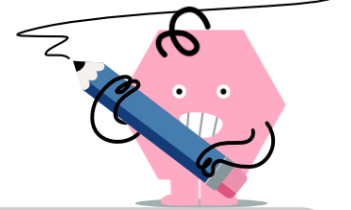




Exponents - Negative Exponents



1

Find the answer when this number is raised to its exponent

$$2^{-3}$$

A	$\frac{1}{16}$	B	$\frac{1}{32}$	C	$\frac{1}{8}$
D	$\frac{1}{4}$	E	$\frac{1}{2}$	F	$\frac{1}{5}$

2

Find the answer when this number is raised to its exponent

$$9^{-2}$$

A	$\frac{1}{18}$	B	$\frac{1}{81}$	C	$\frac{1}{729}$
D	$\frac{1}{84}$	E	$\frac{1}{78}$	F	$\frac{1}{1}$

3

Find the answer when this number is raised to its exponent

$$5^{-2}$$

A	$\frac{1}{7}$	B	$\frac{1}{125}$	C	$\frac{1}{1}$
D	$\frac{1}{10}$	E	$\frac{1}{25}$	F	$\frac{1}{5}$

4

Find the answer when this number is raised to its exponent

$$10^{-2}$$

A	$\frac{1}{10}$	B	$\frac{1}{1}$	C	$\frac{1}{1000}$
D	$\frac{1}{100}$	E	$\frac{1}{10000}$	F	$\frac{1}{20}$

5

Find the answer when this number is raised to its exponent

$$12^{-2}$$

A	$\frac{1}{1728}$	B	$\frac{1}{144}$	C	$\frac{1}{144}$
D	$\frac{1}{1}$	E	$\frac{1}{12}$	F	$\frac{1}{24}$

6

Find the answer when this number is raised to its exponent

$$6^{-3}$$

A	$\frac{1}{36}$	B	$\frac{1}{7776}$	C	$\frac{1}{9}$
D	$\frac{1}{216}$	E	$\frac{1}{1296}$	F	$\frac{1}{18}$

7

Find the answer when this number is raised to its exponent

$$7^{-2}$$

A	$\frac{1}{9}$	B	$\frac{1}{49}$	C	$\frac{1}{14}$
D	$\frac{1}{343}$	E	$\frac{1}{52}$	F	$\frac{1}{2401}$

8

Find the answer when this number is raised to its exponent

$$3^{-4}$$

A	$\frac{1}{9}$	B	$\frac{1}{729}$	C	$\frac{1}{81}$
D	$\frac{1}{7}$	E	$\frac{1}{12}$	F	$\frac{1}{27}$